

Datasheet for ABIN633562
anti-MBNL1 antibody

2 Images



[Go to Product page](#)

Overview

Quantity:	100 µL
Target:	MBNL1
Reactivity:	Human, Dog
Host:	Rabbit
Clonality:	Polyclonal
Conjugate:	This MBNL1 antibody is un-conjugated
Application:	Western Blotting (WB), Immunohistochemistry (IHC)

Product Details

Immunogen:	MBNL1 antibody was raised using a synthetic peptide corresponding to a region with amino acids AMTQSAVKSLKRPLEATFDLGIPQAVLPPLPKRPALEKTINGATAVFNTGI
Purification:	Affinity purified

Target Details

Target:	MBNL1
Alternative Name:	MBNL1 (MBNL1 Products)
Background:	MBNL1 contains 4 C3H1-type zinc fingers and binds to CUG triplet repeat expansion dsRNA.
Molecular Weight:	38 kDa (MW of target protein)
Pathways:	Ribonucleoprotein Complex Subunit Organization

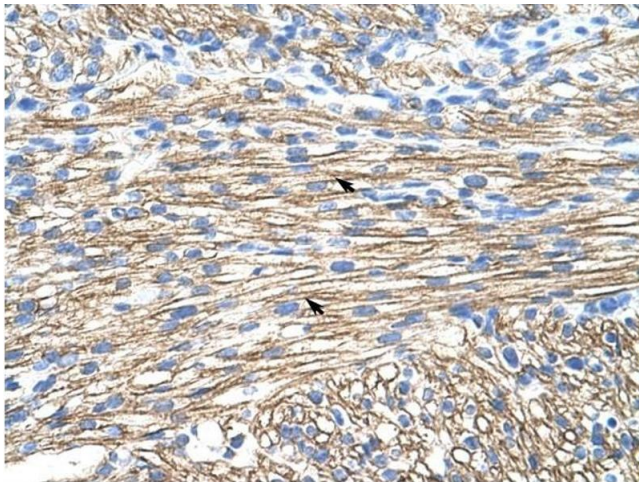
Application Details

Application Notes:	WB: 0.75 µg/mL, IHC: 4-8 µg/mL Optimal conditions should be determined by the investigator.
Comment:	MBNL1 Blocking Peptide, catalog no. 33R-1389, is also available for use as a blocking control in assays to test for specificity of this MBNL1 antibody
Restrictions:	For Research Use only

Handling

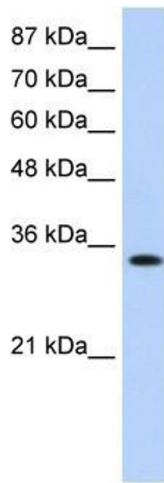
Format:	Lyophilized
Reconstitution:	Lyophilized powder. Add distilled water for a 1 mg/mL concentration of MBNL1 antibody in PBS
Concentration:	Lot specific
Buffer:	PBS
Handling Advice:	Avoid repeated freeze/thaw cycles.
Storage:	4 °C/-20 °C
Storage Comment:	Store at 2-8 °C for short periods. For longer periods of storage, store at -20 °C.

Images



Immunohistochemistry

Image 1. MBNL1 antibody was used for immunohistochemistry at a concentration of 4-8 ug/ml to stain Myocardial cells (arrows) in Human Liver. Magnification is at 400X



Western Blotting

Image 2. MBNL1 antibody used at 0.75 ug/ml to detect target protein.