

Datasheet for ABIN633595 **anti-BAT1 antibody (N-Term)**



[Go to Product page](#)

1 Image

Overview

Quantity:	100 µL
Target:	BAT1 (DDX39)
Binding Specificity:	N-Term
Reactivity:	Human
Host:	Rabbit
Clonality:	Polyclonal
Conjugate:	This BAT1 antibody is un-conjugated
Application:	Western Blotting (WB)

Product Details

Immunogen:	BAT1 antibody was raised using the N terminal of BAT1 corresponding to a region with amino acids MAENDVDNELLDYEDDEVETAAGGDGAEAPAKKDVKGSYVSIHSSGFRDF
Specificity:	BAT1 antibody was raised against the N terminal of BAT1
Purification:	Affinity purified

Target Details

Target:	BAT1 (DDX39)
Alternative Name:	BAT1 (DDX39 Products)
Background:	BAT1 is a member of the DEAD protein family of ATP-dependent RNA helicases. Members of this family are involved in a number of cellular functions including initiation of translation, RNA splicing, and ribosome assembly.

Target Details

Molecular Weight:	49 kDa (MW of target protein)
Pathways:	Ribonucleoprotein Complex Subunit Organization

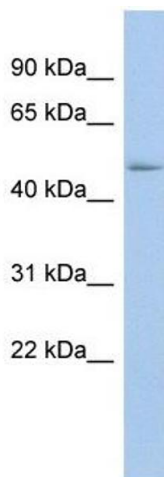
Application Details

Application Notes:	WB: 1 µg/mL Optimal conditions should be determined by the investigator.
Comment:	BAT1 Blocking Peptide, catalog no. 33R-5641, is also available for use as a blocking control in assays to test for specificity of this BAT1 antibody
Restrictions:	For Research Use only

Handling

Format:	Lyophilized
Reconstitution:	Lyophilized powder. Add distilled water for a 1 mg/mL concentration of BAT1 antibody in PBS
Concentration:	Lot specific
Buffer:	PBS
Handling Advice:	Avoid repeated freeze/thaw cycles. Dilute only prior to immediate use.
Storage:	4 °C/-20 °C
Storage Comment:	Store at 2-8 °C for short periods. For longer periods of storage, store at -20 °C.

Images



Western Blotting

Image 1. BAT1 antibody used at 1 ug/ml to detect target protein.