

Datasheet for ABIN633601 **anti-SRPR antibody**



[Go to Product page](#)

1 Image

Overview

Quantity:	100 µL
Target:	SRPR
Reactivity:	Human, Dog
Host:	Rabbit
Clonality:	Polyclonal
Conjugate:	This SRPR antibody is un-conjugated
Application:	Western Blotting (WB)

Product Details

Immunogen:	SRPR antibody was raised using a synthetic peptide corresponding to a region with amino acids DSEKAKKPVRSMIETRGEKPKKAKNSKKKGAKKEGSDGPLATSKPVPAE
Purification:	Affinity purified

Target Details

Target:	SRPR
Alternative Name:	SRPR (SRPR Products)
Background:	SRPR belongs to the GTP-binding SRP family. It is in conjunction with SRP, the correct targeting of the nascent secretory proteins to the endoplasmic reticulum membrane system.
Molecular Weight:	70 kDa (MW of target protein)
Pathways:	ER-Nucleus Signaling

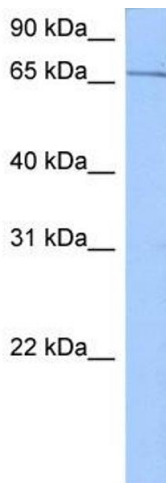
Application Details

Application Notes:	WB: 0.5 µg/mL Optimal conditions should be determined by the investigator.
Comment:	SRPR Blocking Peptide, catalog no. 33R-2162, is also available for use as a blocking control in assays to test for specificity of this SRPR antibody
Restrictions:	For Research Use only

Handling

Format:	Lyophilized
Reconstitution:	Lyophilized powder. Add distilled water for a 1 mg/mL concentration of SRPR antibody in PBS
Concentration:	Lot specific
Buffer:	PBS
Handling Advice:	Avoid repeated freeze/thaw cycles.
Storage:	4 °C/-20 °C
Storage Comment:	Store at 2-8 °C for short periods. For longer periods of storage, store at -20 °C.

Images



Western Blotting

Image 1. SRPR antibody used at 0.5 µg/ml to detect target protein.