

Datasheet for ABIN633604
anti-RBM12 antibody (N-Term)



[Go to Product page](#)

1 Image

Overview

Quantity:	100 µL
Target:	RBM12
Binding Specificity:	N-Term
Reactivity:	Human, Mouse
Host:	Rabbit
Clonality:	Polyclonal
Conjugate:	This RBM12 antibody is un-conjugated
Application:	Western Blotting (WB)

Product Details

Immunogen:	RBM12 antibody was raised using the N terminal of RBM12 corresponding to a region with amino acids PPPSSGMSSRVNLPPTVSNFNPNPSVVTATTSVHESNKNIQTFSTASVG
Specificity:	RBM12 antibody was raised against the N terminal of RBM12
Purification:	Affinity purified

Target Details

Target:	RBM12
Alternative Name:	RBM12 (RBM12 Products)
Background:	RBM12 contains several RNA-binding motifs, potential transmembrane domains, and proline-rich regions. The function of RBM12 remains unknown.

Target Details

Molecular Weight: 97 kDa (MW of target protein)

Application Details

Application Notes: WB: 1 µg/mL
Optimal conditions should be determined by the investigator.

Comment: RBM12 Blocking Peptide, catalog no. 33R-7271, is also available for use as a blocking control in assays to test for specificity of this RBM12 antibody

Restrictions: For Research Use only

Handling

Format: Lyophilized

Reconstitution: Lyophilized powder. Add distilled water for a 1 mg/mL concentration of RBM12 antibody in PBS

Concentration: Lot specific

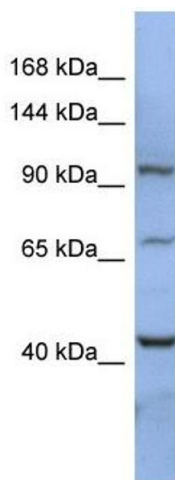
Buffer: PBS

Handling Advice: Avoid repeated freeze/thaw cycles.
Dilute only prior to immediate use.

Storage: 4 °C/-20 °C

Storage Comment: Store at 2-8 °C for short periods. For longer periods of storage, store at -20 °C.

Images



Western Blotting

Image 1. RBM12 antibody used at 1 ug/ml to detect target protein.