

Datasheet for ABIN633607 **anti-SMNDC1 antibody (C-Term)**



[Go to Product page](#)

1 Image

Overview

Quantity:	100 µL
Target:	SMNDC1
Binding Specificity:	C-Term
Reactivity:	Human, Mouse, Rat
Host:	Rabbit
Clonality:	Polyclonal
Conjugate:	This SMNDC1 antibody is un-conjugated
Application:	Western Blotting (WB)

Product Details

Immunogen:	SMNDC1 antibody was raised using the C terminal of SMNDC1 corresponding to a region with amino acids KGQVKRSIFASPESVTGKVGVTGCGIADKPMTQYQDTSKYNVRLMPQ
Specificity:	SMNDC1 antibody was raised against the C terminal of SMNDC1
Purification:	Affinity purified

Target Details

Target:	SMNDC1
Alternative Name:	SMNDC1 (SMNDC1 Products)
Background:	This gene is a paralog of SMN1 gene, which encodes the survival motor neuron protein, mutations in which are cause of autosomal recessive proximal spinal muscular atrophy. SMNDC1 is a nuclear protein that has been identified as a constituent of the spliceosome

Target Details

complex. This gene is differentially expressed, with abundant levels in skeletal muscle, and may share similar cellular function as the SMN1 gene. This gene is a paralog of SMN1 gene, which encodes the survival motor neuron protein, mutations in which are cause of autosomal recessive proximal spinal muscular atrophy.

Molecular Weight: 27 kDa (MW of target protein)

Application Details

Application Notes: WB: 1 µg/mL
Optimal conditions should be determined by the investigator.

Comment: SMNDC1 Blocking Peptide, catalog no. 33R-4403, is also available for use as a blocking control in assays to test for specificity of this SMNDC1 antibody

Restrictions: For Research Use only

Handling

Format: Lyophilized

Reconstitution: Lyophilized powder. Add distilled water for a 1 mg/mL concentration of SMNDC1 antibody in PBS

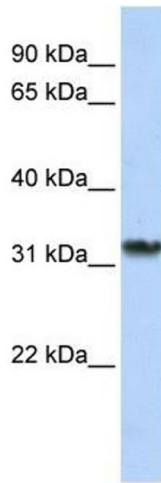
Concentration: Lot specific

Buffer: PBS

Handling Advice: Avoid repeated freeze/thaw cycles.
Dilute only prior to immediate use.

Storage: 4 °C/-20 °C

Storage Comment: Store at 2-8 °C for short periods. For longer periods of storage, store at -20 °C.



Western Blotting

Image 1. SMNDC1 antibody used at 1 ug/ml to detect target protein.