

Datasheet for ABIN633608  
**anti-TIA1 antibody (N-Term)**



[Go to Product page](#)

1 Image

## Overview

Quantity:	100 µL
Target:	TIA1
Binding Specificity:	N-Term
Reactivity:	Human, Mouse
Host:	Rabbit
Clonality:	Polyclonal
Conjugate:	This TIA1 antibody is un-conjugated
Application:	Western Blotting (WB)

## Product Details

Immunogen:	TIA1 antibody was raised using the N terminal of TIA1 corresponding to a region with amino acids MGKEVKVNWATTPSSQKKDTSSSTVVSTQRSQDHFHVFVGDLSPEITTED
Specificity:	TIA1 antibody was raised against the N terminal of TIA1
Purification:	Affinity purified

## Target Details

Target:	TIA1
Alternative Name:	TIA1 ( <a href="#">TIA1 Products</a> )
Background:	TIA1 is a member of a RNA-binding protein family and possesses nucleolytic activity against cytotoxic lymphocyte (CTL) target cells. It has been suggested that this protein may be involved in the induction of apoptosis as it preferentially recognises poly(A) homopolymers and induces

## Target Details

DNA fragmentation in CTL targets. The major granule-associated species is a 15 kDa protein that is thought to be derived from the carboxyl terminus of the 40 kDa product by proteolytic processing.

Molecular Weight: 43 kDa (MW of target protein)

## Application Details

Application Notes: WB: 1 µg/mL  
Optimal conditions should be determined by the investigator.

Comment: TIA1 Blocking Peptide, catalog no. 33R-6040, is also available for use as a blocking control in assays to test for specificity of this TIA1 antibody

Restrictions: For Research Use only

## Handling

Format: Lyophilized

Reconstitution: Lyophilized powder. Add distilled water for a 1 mg/mL concentration of TIA1 antibody in PBS

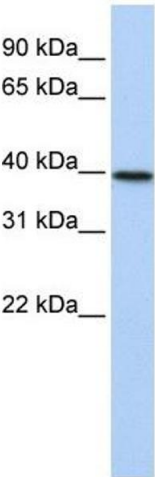
Concentration: Lot specific

Buffer: PBS

Handling Advice: Avoid repeated freeze/thaw cycles.  
Dilute only prior to immediate use.

Storage: 4 °C/-20 °C

Storage Comment: Store at 2-8 °C for short periods. For longer periods of storage, store at -20 °C.



Western Blotting

**Image 1.** TIA1 antibody used at 1 ug/ml to detect target protein.