

Datasheet for ABIN633611 **anti-FXR1 antibody (C-Term)**



[Go to Product page](#)

1 Image

Overview

Quantity:	100 µL
Target:	FXR1
Binding Specificity:	C-Term
Reactivity:	Human, Mouse, Rat, Dog
Host:	Rabbit
Clonality:	Polyclonal
Conjugate:	This FXR1 antibody is un-conjugated
Application:	Western Blotting (WB)

Product Details

Immunogen:	FXR1 antibody was raised using the C terminal of FXR1 corresponding to a region with amino acids EQLRQIGRSYSGRGRGRRGPNYTSGYGTNSELSNPSETESERKDELSDW
Specificity:	FXR1 antibody was raised against the C terminal of FXR1
Purification:	Affinity purified

Target Details

Target:	FXR1
Alternative Name:	FXR1 (FXR1 Products)
Background:	FXR1 is an RNA binding protein that interacts with the functionally-similar proteins FMR1 and FXR2. These proteins shuttle between the nucleus and cytoplasm and associate with polyribosomes, predominantly with the 60S ribosomal subunit.

Target Details

Molecular Weight: 68 kDa (MW of target protein)

Application Details

Application Notes: WB: 0.25 µg/mL

Optimal conditions should be determined by the investigator.

Comment: FXR1 Blocking Peptide, catalog no. 33R-2671, is also available for use as a blocking control in assays to test for specificity of this FXR1 antibody

Restrictions: For Research Use only

Handling

Format: Lyophilized

Reconstitution: Lyophilized powder. Add distilled water for a 1 mg/mL concentration of FXR1 antibody in PBS

Concentration: Lot specific

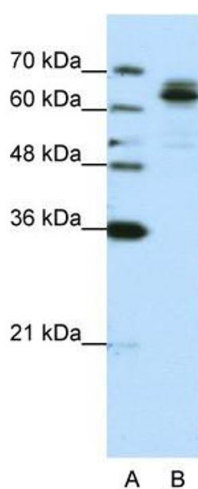
Buffer: PBS

Handling Advice: Avoid repeated freeze/thaw cycles.
Dilute only prior to immediate use.

Storage: 4 °C/-20 °C

Storage Comment: Store at 2-8 °C for short periods. For longer periods of storage, store at -20 °C.

Images



Western Blotting

Image 1. FXR1 antibody used at 0.25 µg/ml to detect target protein.