

Datasheet for ABIN633628
anti-TOMM40L antibody



[Go to Product page](#)

1 Image

Overview

Quantity:	100 µL
Target:	TOMM40L
Reactivity:	Human, Rat, Mouse
Host:	Rabbit
Clonality:	Polyclonal
Conjugate:	This TOMM40L antibody is un-conjugated
Application:	Western Blotting (WB)

Product Details

Immunogen:	TOMM40 L antibody was raised using a synthetic peptide corresponding to a region with amino acids LNAQVLLLLAERLRAKAVFQTQQAKFLTWQFDGEYRGDDYTATLTLGNPD
Purification:	Affinity purified

Target Details

Target:	TOMM40L
Alternative Name:	TOMM40L (TOMM40L Products)
Background:	TOMM40L is a potential channel-forming protein implicated in import of protein precursors into mitochondria.
Molecular Weight:	34 kDa (MW of target protein)

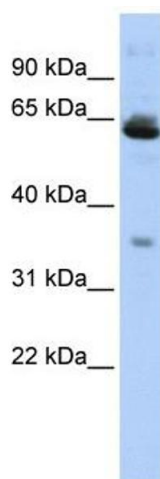
Application Details

Application Notes:	WB: 1 µg/mL Optimal conditions should be determined by the investigator.
Comment:	TOMM40L Blocking Peptide, catalog no. 33R-5217, is also available for use as a blocking control in assays to test for specificity of this TOMM40L antibody
Restrictions:	For Research Use only

Handling

Format:	Lyophilized
Reconstitution:	Lyophilized powder. Add distilled water for a 1 mg/mL concentration of TOMM40 antibody in PBS
Concentration:	Lot specific
Buffer:	PBS
Handling Advice:	Avoid repeated freeze/thaw cycles.
Storage:	4 °C/-20 °C
Storage Comment:	Store at 2-8 °C for short periods. For longer periods of storage, store at -20 °C.

Images



Western Blotting

Image 1. TOMM40L antibody used at 1 µg/ml to detect target protein.