

Datasheet for ABIN633631 **anti-CLCNKB antibody (N-Term)**



[Go to Product page](#)

1 Image

Overview

Quantity:	100 µL
Target:	CLCNKB
Binding Specificity:	N-Term
Reactivity:	Human
Host:	Rabbit
Clonality:	Polyclonal
Conjugate:	This CLCNKB antibody is un-conjugated
Application:	Western Blotting (WB)

Product Details

Immunogen:	CLCNKB antibody was raised using the N terminal of CLCNKB corresponding to a region with amino acids MEEFVGLREGSSGNPVTLQELWGPCPRIRRGIRGGLEWLKQKLFRLGEDW
Specificity:	CLCNKB antibody was raised against the N terminal of CLCNKB
Purification:	Affinity purified

Target Details

Target:	CLCNKB
Alternative Name:	CLCNKB (CLCNKB Products)
Background:	Chloride channel Kb (CLCNKB) is a member of the CLC family of voltage-gated chloride channels, which comprises at least 9 mammalian chloride channels. Each is believed to have 12 transmembrane domains and intracellular N and C termini. Mutations in CLCNKB result in

Target Details

the autosomal recessive Type III Bartter Syndrome. CLCNKA and CLCNKB are closely related (94% sequence identity), tightly linked (separated by 11 kb of genomic sequence) and are both expressed in mammalian kidney.

Molecular Weight: 50 kDa (MW of target protein)

Application Details

Application Notes: WB: 0.25 µg/mL
Optimal conditions should be determined by the investigator.

Comment: CLCNKB Blocking Peptide, catalog no. 33R-5901, is also available for use as a blocking control in assays to test for specificity of this CLCNKB antibody

Restrictions: For Research Use only

Handling

Format: Lyophilized

Reconstitution: Lyophilized powder. Add distilled water for a 1 mg/mL concentration of CLCNKB antibody in PBS

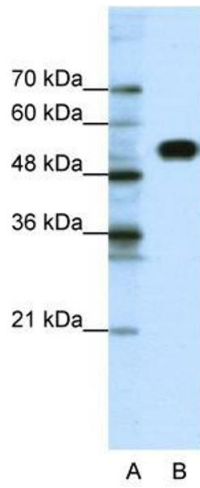
Concentration: Lot specific

Buffer: PBS

Handling Advice: Avoid repeated freeze/thaw cycles.
Dilute only prior to immediate use.

Storage: 4 °C/-20 °C

Storage Comment: Store at 2-8 °C for short periods. For longer periods of storage, store at -20 °C.



Western Blotting

Image 1. CLCNKB antibody used at 0.25 ug/ml to detect target protein.