

Datasheet for ABIN633650 **anti-P2RX6 antibody (N-Term)**



[Go to Product page](#)

1 Image

Overview

Quantity:	100 µL
Target:	P2RX6
Binding Specificity:	N-Term
Reactivity:	Human
Host:	Rabbit
Clonality:	Polyclonal
Conjugate:	This P2RX6 antibody is un-conjugated
Application:	Western Blotting (WB)

Product Details

Immunogen:	P2 RXL1 antibody was raised using the N terminal of P2 XL1 corresponding to a region with amino acids NWRVGALQRLQLQFGIVVYVVGWALLAKKGYQERDLEPQFSITKLKGVSV
Specificity:	P2 RXL1 antibody was raised against the N terminal of P2 XL1
Purification:	Affinity purified

Target Details

Target:	P2RX6
Alternative Name:	P2RXL1 (P2RX6 Products)
Background:	The protein encoded by this gene belongs to the family of P2X receptors, which are ATP-gated ion channels and mediate rapid and selective permeability to cations. This gene is predominantly expressed in skeletal muscle, and regulated by p53. The encoded protein is

Target Details

associated with VE-cadherin at the adherens junctions of human umbilical vein endothelial cells. Alternative splicing results in multiple transcript variants. A related pseudogene, which is also located on chromosome 22, has been identified.

Molecular Weight: 49 kDa (MW of target protein)

Application Details

Application Notes: WB: 1 µg/mL
Optimal conditions should be determined by the investigator.

Comment: P2RXL1 Blocking Peptide, catalog no. 33R-6932, is also available for use as a blocking control in assays to test for specificity of this P2RXL1 antibody

Restrictions: For Research Use only

Handling

Format: Lyophilized

Reconstitution: Lyophilized powder. Add distilled water for a 1 mg/mL concentration of P0 XL1 antibody in PBS

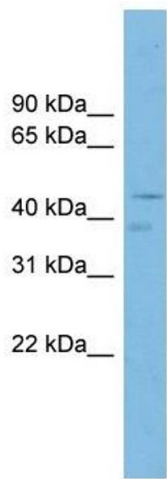
Concentration: Lot specific

Buffer: PBS

Handling Advice: Avoid repeated freeze/thaw cycles.
Dilute only prior to immediate use.

Storage: 4 °C/-20 °C

Storage Comment: Store at 2-8 °C for short periods. For longer periods of storage, store at -20 °C.



Western Blotting

Image 1. P2RXL1 antibody used at 1 ug/ml to detect target protein.