

Datasheet for ABIN633652  
**anti-SHROOM2 antibody (Middle Region)**



[Go to Product page](#)

1 Image

## Overview

Quantity:	100 µL
Target:	SHROOM2
Binding Specificity:	Middle Region
Reactivity:	Human, Mouse, Rat
Host:	Rabbit
Clonality:	Polyclonal
Conjugate:	This SHROOM2 antibody is un-conjugated
Application:	Western Blotting (WB)

## Product Details

Immunogen:	SHROOM2 antibody was raised using the middle region of SHROOM2 corresponding to a region with amino acids CTSPGGLSYMKAKEKTVEDLKSEELAREIVGKDKSLADILDPSVKIKTTM
Specificity:	SHROOM2 antibody was raised against the middle region of SHROOM2
Purification:	Affinity purified

## Target Details

Target:	SHROOM2
Alternative Name:	SHROOM2 ( <a href="#">SHROOM2 Products</a> )
Background:	SHROOM2 shares significant similarities with the apical protein from <i>Xenopus laevis</i> which is implicated in amiloride-sensitive sodium channel activity. This gene is a strong candidate gene for ocular albinism type 1 syndrome.

## Target Details

---

Molecular Weight:	176 kDa (MW of target protein)
Pathways:	<a href="#">Cell-Cell Junction Organization, Asymmetric Protein Localization</a>

## Application Details

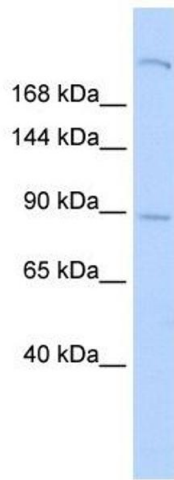
---

Application Notes:	WB: 1 µg/mL Optimal conditions should be determined by the investigator.
Comment:	SHROOM2 Blocking Peptide, catalog no. 33R-1824, is also available for use as a blocking control in assays to test for specificity of this SHROOM2 antibody
Restrictions:	For Research Use only

## Handling

---

Format:	Lyophilized
Reconstitution:	Lyophilized powder. Add distilled water for a 1 mg/mL concentration of SHROOM2 antibody in PBS
Concentration:	Lot specific
Buffer:	PBS
Handling Advice:	Avoid repeated freeze/thaw cycles. Dilute only prior to immediate use.
Storage:	4 °C/-20 °C
Storage Comment:	Store at 2-8 °C for short periods. For longer periods of storage, store at -20 °C.



### Western Blotting

**Image 1.** SHROOM2 antibody used at 1 ug/ml to detect target protein.