

Datasheet for ABIN633658
anti-KCTD7 antibody (N-Term)



[Go to Product page](#)

1 Image

Overview

Quantity:	100 µL
Target:	KCTD7
Binding Specificity:	N-Term
Reactivity:	Human, Rat, Mouse
Host:	Rabbit
Clonality:	Polyclonal
Conjugate:	This KCTD7 antibody is un-conjugated
Application:	Western Blotting (WB)

Product Details

Immunogen:	KCTD7 antibody was raised using the N terminal of KCTD7 corresponding to a region with amino acids VVVTGREPDSRRQDGAMSSSDAEDDFLEPATPTATQAGHALPLLPQEFPE
Specificity:	KCTD7 antibody was raised against the N terminal of KCTD7
Purification:	Affinity purified

Target Details

Target:	KCTD7
Alternative Name:	KCTD7 (KCTD7 Products)
Background:	The KCTD gene family, including KCTD7, encode predicted proteins that contain N-terminal domain that is homologous to the T1 domain in voltage-gated potassium channels. KCTD7 displays a primary sequence and hydropathy profile indicating intracytoplasmic localization.

Target Details

EST database analysis showed that KCTD7 is expressed in human and mouse brain.

Molecular Weight: 33 kDa (MW of target protein)

Application Details

Application Notes: WB: 1 µg/mL

Optimal conditions should be determined by the investigator.

Comment: KCTD7 Blocking Peptide, catalog no. 33R-9904, is also available for use as a blocking control in assays to test for specificity of this KCTD7 antibody

Restrictions: For Research Use only

Handling

Format: Lyophilized

Reconstitution: Lyophilized powder. Add distilled water for a 1 mg/mL concentration of KCTD7 antibody in PBS

Concentration: Lot specific

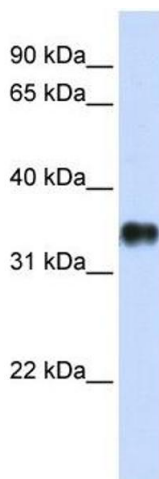
Buffer: PBS

Handling Advice: Avoid repeated freeze/thaw cycles.
Dilute only prior to immediate use.

Storage: 4 °C/-20 °C

Storage Comment: Store at 2-8 °C for short periods. For longer periods of storage, store at -20 °C.

Images



Western Blotting

Image 1. KCTD7 antibody used at 1 µg/ml to detect target protein.