

Datasheet for ABIN633664  
**anti-KCTD4 antibody (N-Term)**



[Go to Product page](#)

1 Image

## Overview

Quantity:	100 µL
Target:	KCTD4
Binding Specificity:	N-Term
Reactivity:	Human, Mouse
Host:	Rabbit
Clonality:	Polyclonal
Conjugate:	This KCTD4 antibody is un-conjugated
Application:	Western Blotting (WB)

## Product Details

Immunogen:	KCTD4 antibody was raised using the N terminal of KCTD4 corresponding to a region with amino acids MTLNVGGYLYITQKQTLTKYPDTFLEGIVNGKILCPFADAGHYFIDRDGL
Specificity:	KCTD4 antibody was raised against the N terminal of KCTD4
Purification:	Affinity purified

## Target Details

Target:	KCTD4
Alternative Name:	KCTD4 ( <a href="#">KCTD4 Products</a> )
Background:	KCTD4 contains 1 BTB (POZ) domain. The exact function of KCTD4 remains unknown.
Molecular Weight:	30 kDa (MW of target protein)

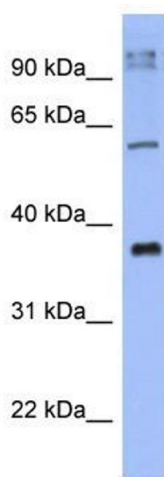
## Application Details

Application Notes:	WB: 1 µg/mL Optimal conditions should be determined by the investigator.
Comment:	KCTD4 Blocking Peptide, catalog no. 33R-6554, is also available for use as a blocking control in assays to test for specificity of this KCTD4 antibody
Restrictions:	For Research Use only

## Handling

Format:	Lyophilized
Reconstitution:	Lyophilized powder. Add distilled water for a 1 mg/mL concentration of KCTD4 antibody in PBS
Concentration:	Lot specific
Buffer:	PBS
Handling Advice:	Avoid repeated freeze/thaw cycles. Dilute only prior to immediate use.
Storage:	4 °C/-20 °C
Storage Comment:	Store at 2-8 °C for short periods. For longer periods of storage, store at -20 °C.

## Images



### Western Blotting

**Image 1.** KCTD4 antibody used at 1 ug/ml to detect target protein.