

Datasheet for ABIN633675
anti-CACNA2D1 antibody (Middle Region)



[Go to Product page](#)

1 Image

Overview

Quantity:	100 µL
Target:	CACNA2D1
Binding Specificity:	Middle Region
Reactivity:	Human, Rat, Mouse, Dog
Host:	Rabbit
Clonality:	Polyclonal
Conjugate:	This CACNA2D1 antibody is un-conjugated
Application:	Western Blotting (WB)

Product Details

Immunogen:	CACNA2 D1 antibody was raised using the middle region of CACNA2 1 corresponding to a region with amino acids PKSQEPVTLDFLDAELENLIKVEIRNKMIDGESGEKTFRTLKVSQDERYI
Specificity:	CACNA2 D1 antibody was raised against the middle region of CACNA2 1
Purification:	Affinity purified

Target Details

Target:	CACNA2D1
Alternative Name:	CACNA2D1 (CACNA2D1 Products)
Background:	CACNA2D1 encodes a member of the alpha-2/delta subunit family, a protein in the voltage-dependent calcium channel complex. Calcium channels mediate the influx of calcium ions into the cell upon membrane polarization and consist of a complex of alpha-1, alpha-2/delta, beta,

Target Details

and gamma subunits in a 1:1:1:1 ratio.

Molecular Weight: 120 kDa (MW of target protein)

Application Details

Application Notes: WB: 0.12 µg/mL
Optimal conditions should be determined by the investigator.

Comment: CACNA2D1 Blocking Peptide, catalog no. 33R-7178, is also available for use as a blocking control in assays to test for specificity of this CACNA2D1 antibody

Restrictions: For Research Use only

Handling

Format: Lyophilized

Reconstitution: Lyophilized powder. Add distilled water for a 1 mg/mL concentration of CACNA0 1 antibody in PBS

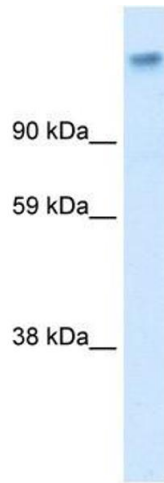
Concentration: Lot specific

Buffer: PBS

Handling Advice: Avoid repeated freeze/thaw cycles.
Dilute only prior to immediate use.

Storage: 4 °C/-20 °C

Storage Comment: Store at 2-8 °C for short periods. For longer periods of storage, store at -20 °C.



Western Blotting

Image 1. CACNA2D1 antibody used at 0.12 ug/ml to detect target protein.