

Datasheet for ABIN633676
anti-NUDT9 antibody



[Go to Product page](#)

2 Images

Overview

Quantity:	100 µL
Target:	NUDT9
Reactivity:	Human, Mouse, Rat, Dog
Host:	Rabbit
Clonality:	Polyclonal
Conjugate:	This NUDT9 antibody is un-conjugated
Application:	Western Blotting (WB), Immunohistochemistry (IHC)

Product Details

Immunogen:	NUDT9 antibody was raised using a synthetic peptide corresponding to a region with amino acids LEAGDDAGKVKWVDINDKCLKLYASHSQFIKLVAEKRDHAWSEDSEADCHA
Purification:	Affinity purified

Target Details

Target:	NUDT9
Alternative Name:	NUDT9 (NUDT9 Products)
Background:	Human ADP-ribose pyrophosphatase NUDT9 belongs to a superfamily of Nudix hydrolases that catabolize potentially toxic compounds in the cell. NUDT9 alpha protein is targeted highly specifically to mitochondria, whereas the predicted protein of the NUDT9 beta transcript, which is missing this sequence, exhibits no clear subcellular localization. Investigation of the physical and enzymatic properties of NUDT9 indicates that it is functional as a monomer, optimally

Target Details

active at near neutral pH, and that it requires divalent metal ions and an intact Nudix motif for enzymatic activity.

Molecular Weight: 33 kDa (MW of target protein)

Application Details

Application Notes: WB: 1.25 µg/mL, IHC: 4-8 µg/mL
Optimal conditions should be determined by the investigator.

Comment: NUDT9 Blocking Peptide, catalog no. 33R-4873, is also available for use as a blocking control in assays to test for specificity of this NUDT9 antibody

Restrictions: For Research Use only

Handling

Format: Lyophilized

Reconstitution: Lyophilized powder. Add distilled water for a 1 mg/mL concentration of NUDT9 antibody in PBS

Concentration: Lot specific

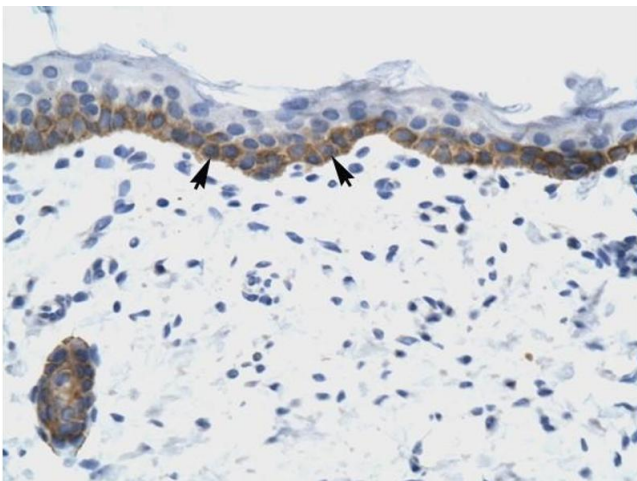
Buffer: PBS

Handling Advice: Avoid repeated freeze/thaw cycles.

Storage: 4 °C/-20 °C

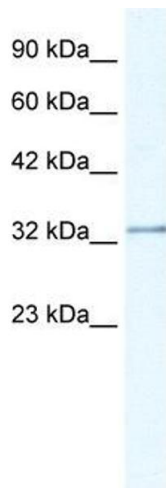
Storage Comment: Store at 2-8 °C for short periods. For longer periods of storage, store at -20 °C.

Images



Immunohistochemistry

Image 1. NUDT9 antibody was used for immunohistochemistry at a concentration of 4-8 µg/ml to stain Squamous epithelial cells (arrows) in Human Skin. Magnification is at 400X



Western Blotting

Image 2. NUDT9 antibody used at 1.25 ug/ml to detect target protein.