

Datasheet for ABIN633686  
**anti-KCNA10 antibody (N-Term)**



[Go to Product page](#)

2 Images

## Overview

Quantity:	100 µL
Target:	KCNA10
Binding Specificity:	N-Term
Reactivity:	Human
Host:	Rabbit
Clonality:	Polyclonal
Conjugate:	This KCNA10 antibody is un-conjugated
Application:	Western Blotting (WB)

## Product Details

Immunogen:	KCNA10 antibody was raised using the N terminal of KCNA10 corresponding to a region with amino acids DVCGWKEMEVALVNFDNSDEIQEPPGYATDFDSTSPKGRPGGSSFSNGKI
Specificity:	KCNA10 antibody was raised against the N terminal of KCNA10
Purification:	Affinity purified

## Target Details

Target:	KCNA10
Alternative Name:	KCNA10 ( <a href="#">KCNA10 Products</a> )
Background:	KCNA10 is a member of the potassium channel, voltage-gated, shaker-related subfamily. This member contains six membrane-spanning domains with a shaker-type repeat in the fourth segment. It is specifically regulated by cGMP and postulated to mediate the effects of

## Target Details

---

substances that increase intracellular cGMP. This gene is intronless, and the gene is clustered with genes KCNA2 and KCNA3 on chromosome 1.

Molecular Weight: 58 kDa (MW of target protein)

## Application Details

---

Application Notes: WB: 1 µg/mL  
Optimal conditions should be determined by the investigator.

Comment: KCNA10 Blocking Peptide, catalog no. 33R-2212, is also available for use as a blocking control in assays to test for specificity of this KCNA10 antibody

Restrictions: For Research Use only

## Handling

---

Format: Lyophilized

Reconstitution: Lyophilized powder. Add distilled water for a 1 mg/mL concentration of KCNA10 antibody in PBS

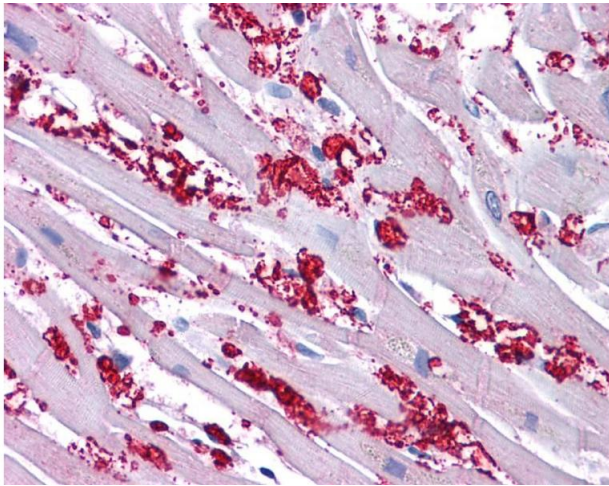
Concentration: Lot specific

Buffer: PBS

Handling Advice: Avoid repeated freeze/thaw cycles.  
Dilute only prior to immediate use.

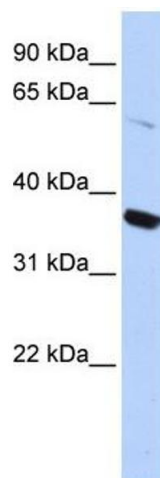
Storage: 4 °C/-20 °C

Storage Comment: Store at 2-8 °C for short periods. For longer periods of storage, store at -20 °C.



### Immunohistochemistry

**Image 1.** KCNA10 antibody was used for immunohistochemistry at a concentration of 4-8 ug/ml. Magnification is at 400X



### Western Blotting

**Image 2.** KCNA10 antibody used at 1 ug/ml to detect target protein.