

Datasheet for ABIN633707
anti-KCNJ5 antibody (N-Term)



[Go to Product page](#)

1 Image

Overview

Quantity:	100 µL
Target:	KCNJ5
Binding Specificity:	N-Term
Reactivity:	Human
Host:	Rabbit
Clonality:	Polyclonal
Conjugate:	This KCNJ5 antibody is un-conjugated
Application:	Western Blotting (WB)

Product Details

Immunogen:	KCNJ5 antibody was raised using the N terminal of KCNJ5 corresponding to a region with amino acids AGDSRNAMNQDMEIGVTPWDPKKIPKQARDYVPIATDRTRLLAEGKKPRQ
Specificity:	KCNJ5 antibody was raised against the N terminal of KCNJ5
Purification:	Affinity purified

Target Details

Target:	KCNJ5
Alternative Name:	KCNJ5 (KCNJ5 Products)
Background:	Potassium channels are present in most mammalian cells, where they participate in a wide range of physiologic responses. KCNJ5 is an integral membrane protein and inward-rectifier type potassium channel. KCNJ5, which has a greater tendency to allow potassium to flow into

Target Details

a cell rather than out of a cell, is controlled by G-proteins. It may associate with two other G-protein-activated potassium channels to form a heteromultimeric pore-forming complex.

Molecular Weight: 48 kDa (MW of target protein)

Pathways: [Notch Signaling](#)

Application Details

Application Notes: WB: 1 µg/mL
Optimal conditions should be determined by the investigator.

Comment: KCNJ5 Blocking Peptide, catalog no. 33R-1190, is also available for use as a blocking control in assays to test for specificity of this KCNJ5 antibody

Restrictions: For Research Use only

Handling

Format: Lyophilized

Reconstitution: Lyophilized powder. Add distilled water for a 1 mg/mL concentration of KCNJ5 antibody in PBS

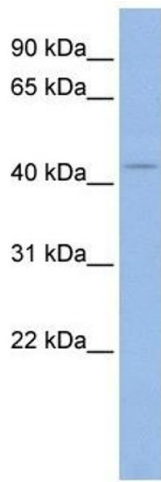
Concentration: Lot specific

Buffer: PBS

Handling Advice: Avoid repeated freeze/thaw cycles.
Dilute only prior to immediate use.

Storage: 4 °C/-20 °C

Storage Comment: Store at 2-8 °C for short periods. For longer periods of storage, store at -20 °C.



Western Blotting

Image 1. KCNJ5 antibody used at 1 ug/ml to detect target protein.