

Datasheet for ABIN633708
anti-Bestrophin 3 antibody (N-Term)



[Go to Product page](#)

1 Image

Overview

Quantity:	100 µL
Target:	Bestrophin 3 (BEST3)
Binding Specificity:	N-Term
Reactivity:	Human, Mouse, Rat
Host:	Rabbit
Clonality:	Polyclonal
Conjugate:	This Bestrophin 3 antibody is un-conjugated
Application:	Western Blotting (WB)

Product Details

Immunogen:	BEST3 antibody was raised using the N terminal of BEST3 corresponding to a region with amino acids PLVYTQVAEQLINPFGEDDDDFETNWCIDRNLQVSL LAVDEM HMSLPKMK
Specificity:	BEST3 antibody was raised against the N terminal of BEST3
Purification:	Affinity purified

Target Details

Target:	Bestrophin 3 (BEST3)
Alternative Name:	BEST3 (BEST3 Products)
Background:	BEST3 belongs to the bestrophin family of anion channels, which includes BEST1, the gene mutant in vitelliform macular dystrophy, and 2 other BEST1-like genes, BEST2 and BEST4.

Target Details

Molecular Weight: 51 kDa (MW of target protein)

Application Details

Application Notes: WB: 1 µg/mL
Optimal conditions should be determined by the investigator.

Comment: BEST3 Blocking Peptide, catalog no. 33R-7214, is also available for use as a blocking control in assays to test for specificity of this BEST3 antibody

Restrictions: For Research Use only

Handling

Format: Lyophilized

Reconstitution: Lyophilized powder. Add distilled water for a 1 mg/mL concentration of BEST3 antibody in PBS

Concentration: Lot specific

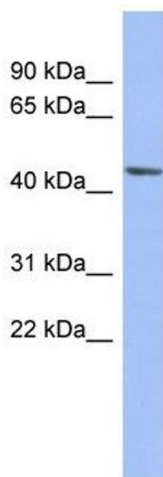
Buffer: PBS

Handling Advice: Avoid repeated freeze/thaw cycles.
Dilute only prior to immediate use.

Storage: 4 °C/-20 °C

Storage Comment: Store at 2-8 °C for short periods. For longer periods of storage, store at -20 °C.

Images



Western Blotting

Image 1. BEST3 antibody used at 1 µg/ml to detect target protein.