

Datasheet for ABIN633731 **anti-TPCN1 antibody (N-Term)**



[Go to Product page](#)

1 Image

Overview

Quantity:	100 µL
Target:	TPCN1
Binding Specificity:	N-Term
Reactivity:	Human
Host:	Rabbit
Clonality:	Polyclonal
Conjugate:	This TPCN1 antibody is un-conjugated
Application:	Western Blotting (WB)

Product Details

Immunogen:	TPCN1 antibody was raised using the N terminal of TPCN1 corresponding to a region with amino acids YQEAAIYLQEGENNDKFFTHPKDAKALAAAYLFAHNHLFYLMELATALLLL
Specificity:	TPCN1 antibody was raised against the N terminal of TPCN1
Purification:	Affinity purified

Target Details

Target:	TPCN1
Alternative Name:	TPCN1 (TPCN1 Products)
Background:	TPCN1 may function as one of the major voltage-gated Ca ²⁺ channel (VDCC) across the plasma membrane. Voltage-gated Ca(2+) and Na+ channels have 4 homologous domains, each containing 6 transmembrane segments, S1 to S6. TPCN1 is similar to these channels, but it has

Target Details

only 2 domains containing S1 to S6.

Molecular Weight: 94 kDa (MW of target protein)

Application Details

Application Notes: WB: 1 µg/mL

Optimal conditions should be determined by the investigator.

Comment: TPCN1 Blocking Peptide, catalog no. 33R-10210, is also available for use as a blocking control in assays to test for specificity of this TPCN1 antibody

Restrictions: For Research Use only

Handling

Format: Lyophilized

Reconstitution: Lyophilized powder. Add distilled water for a 1 mg/mL concentration of TPCN1 antibody in PBS

Concentration: Lot specific

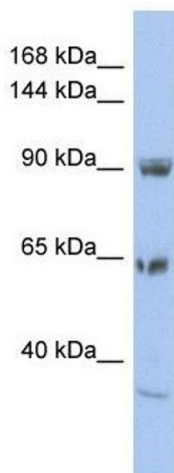
Buffer: PBS

Handling Advice: Avoid repeated freeze/thaw cycles.
Dilute only prior to immediate use.

Storage: 4 °C/-20 °C

Storage Comment: Store at 2-8 °C for short periods. For longer periods of storage, store at -20 °C.

Images



Western Blotting

Image 1. TPCN1 antibody used at 1 µg/ml to detect target protein.