

Datasheet for ABIN633738 **anti-KCNH2 antibody**



[Go to Product page](#)

1 Image

Overview

Quantity:	100 µL
Target:	KCNH2
Reactivity:	Human, Rat, Mouse, Dog
Host:	Rabbit
Clonality:	Polyclonal
Conjugate:	This KCNH2 antibody is un-conjugated
Application:	Western Blotting (WB)

Product Details

Immunogen:	KCNH2 antibody was raised using a synthetic peptide corresponding to a region with amino acids SQVSQFMACEELPPGAPELPQEGPTRRLSLPGQLGALTSQPLHRHGSDPG
Purification:	Affinity purified

Target Details

Target:	KCNH2
Alternative Name:	KCNH2 (KCNH2 Products)
Background:	This gene encodes a voltage-activated potassium channel belonging to the eag family. It shares sequence similarity with the Drosophila ether-a-go-go (eag) gene. Mutations in this gene can cause long QT syndrome type 2 (LQT2).
Molecular Weight:	90 kDa (MW of target protein)

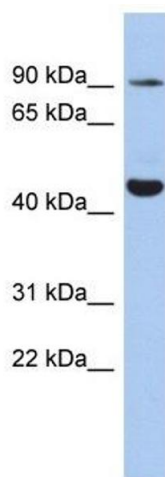
Application Details

Application Notes:	WB: 1 µg/mL Optimal conditions should be determined by the investigator.
Comment:	KCNH2 Blocking Peptide, catalog no. 33R-8732, is also available for use as a blocking control in assays to test for specificity of this KCNH2 antibody
Restrictions:	For Research Use only

Handling

Format:	Lyophilized
Reconstitution:	Lyophilized powder. Add distilled water for a 1 mg/mL concentration of KCNH2 antibody in PBS
Concentration:	Lot specific
Buffer:	PBS
Handling Advice:	Avoid repeated freeze/thaw cycles.
Storage:	4 °C/-20 °C
Storage Comment:	Store at 2-8 °C for short periods. For longer periods of storage, store at -20 °C.

Images



Western Blotting

Image 1. KCNH2 antibody used at 1 µg/ml to detect target protein.