

Datasheet for ABIN633748
anti-TRPC6 antibody (N-Term)



[Go to Product page](#)

1 Image

Overview

Quantity:	100 µL
Target:	TRPC6
Binding Specificity:	N-Term
Reactivity:	Human, Mouse, Rat
Host:	Rabbit
Clonality:	Polyclonal
Conjugate:	This TRPC6 antibody is un-conjugated
Application:	Western Blotting (WB)

Product Details

Immunogen:	TRPC6 antibody was raised using the N terminal of TRPC6 corresponding to a region with amino acids MSQSPAFGPRRGSSPRGAAGAAARRNESQDYLLMDSELGEDGCPQAPLPC
Specificity:	TRPC6 antibody was raised against the N terminal of TRPC6
Purification:	Affinity purified

Target Details

Target:	TRPC6
Alternative Name:	TRPC6 (TRPC6 Products)
Background:	TRPC6 forms a receptor-activated calcium channel in the cell membrane. The channel is activated by diacylglycerol and is thought to be under the control of a phosphatidylinositol second messenger system. Activation of this channel occurs independently of protein kinase C

Target Details

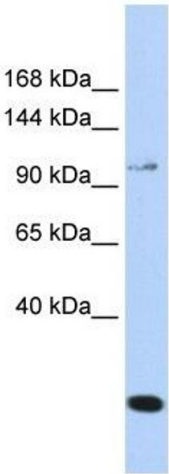
	and is not triggered by low levels of intracellular calcium. Defects in this gene are a cause of focal segmental glomerulosclerosis 2 (FSGS2).
Molecular Weight:	106 kDa (MW of target protein)

Application Details

Application Notes:	WB: 1 µg/mL Optimal conditions should be determined by the investigator.
Comment:	TRPC6 Blocking Peptide, catalog no. 33R-6482, is also available for use as a blocking control in assays to test for specificity of this TRPC6 antibody
Restrictions:	For Research Use only

Handling

Format:	Lyophilized
Reconstitution:	Lyophilized powder. Add distilled water for a 1 mg/mL concentration of TRPC6 antibody in PBS
Concentration:	Lot specific
Buffer:	PBS
Handling Advice:	Avoid repeated freeze/thaw cycles. Dilute only prior to immediate use.
Storage:	4 °C/-20 °C
Storage Comment:	Store at 2-8 °C for short periods. For longer periods of storage, store at -20 °C.



Western Blotting

Image 1. TRPC6 antibody used at 1 ug/ml to detect target protein.