

Datasheet for ABIN633763 anti-GABRB2 antibody



[Go to Product page](#)

1 Image

Overview

Quantity:	100 µL
Target:	GABRB2
Reactivity:	Human, Rat, Mouse, Dog, Zebrafish (Danio rerio)
Host:	Rabbit
Clonality:	Polyclonal
Conjugate:	This GABRB2 antibody is un-conjugated
Application:	Western Blotting (WB)

Product Details

Immunogen:	GABRB2 antibody was raised using a synthetic peptide corresponding to a region with amino acids HPDGTVLYGLRITTTAACMMDLRRYPLDEQNCTLEIESYGYTTDDIEFYW
Purification:	Affinity purified

Target Details

Target:	GABRB2
Alternative Name:	GABRB2 (GABRB2 Products)
Background:	The gamma-aminobutyric acid (GABA) A receptor is a multisubunit chloride channel that mediates the fastest inhibitory synaptic transmission in the central nervous system. This gene encodes GABA A receptor, beta 2 subunit. It is mapped to chromosome 5q34 in a cluster comprised of genes encoding alpha 1 and gamma 2 subunits of the GABA A receptor. The gamma-aminobutyric acid (GABA) A receptor is a multisubunit chloride channel that mediates

Target Details

the fastest inhibitory synaptic transmission in the central nervous system.

Molecular Weight: 55 kDa (MW of target protein)

Pathways: [Sensory Perception of Sound, Synaptic Membrane](#)

Application Details

Application Notes: WB: 0.5 µg/mL
Optimal conditions should be determined by the investigator.

Comment: GABRB2 Blocking Peptide, catalog no. 33R-3806, is also available for use as a blocking control in assays to test for specificity of this GABRB2 antibody

Restrictions: For Research Use only

Handling

Format: Lyophilized

Reconstitution: Lyophilized powder. Add distilled water for a 1 mg/mL concentration of GABRB2 antibody in PBS

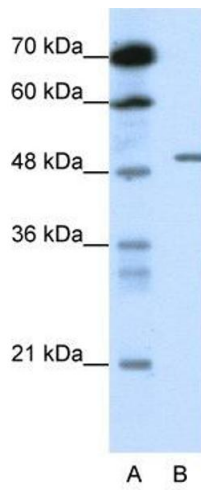
Concentration: Lot specific

Buffer: PBS

Handling Advice: Avoid repeated freeze/thaw cycles.

Storage: 4 °C/-20 °C

Storage Comment: Store at 2-8 °C for short periods. For longer periods of storage, store at -20 °C.



Western Blotting

Image 1. GABRB2 antibody used at 0.5 ug/ml to detect target protein.