

Datasheet for ABIN633776 **anti-KCNK6 antibody (N-Term)**



[Go to Product page](#)

1 Image

Overview

Quantity:	100 µL
Target:	KCNK6
Binding Specificity:	N-Term
Reactivity:	Human
Host:	Rabbit
Clonality:	Polyclonal
Conjugate:	This KCNK6 antibody is un-conjugated
Application:	Western Blotting (WB)

Product Details

Immunogen:	KCNK6 antibody was raised using the N terminal of KCNK6 corresponding to a region with amino acids RLGRVVLANASGSANASDPAWDFASALFFASTLITTVGYGYTTPLTDAGK
Specificity:	KCNK6 antibody was raised against the n terminal of KCNK6
Purification:	Affinity purified

Target Details

Target:	KCNK6
Alternative Name:	KCNK6 (KCNK6 Products)
Background:	KCNK6 is one of the members of the superfamily of potassium channel proteins containing two pore-forming P domains. This channel protein, considered an open rectifier, is widely expressed. It is stimulated by arachidonic acid, and inhibited by internal acidification and

Target Details

volatile anaesthetics.

Molecular Weight: 34 kDa (MW of target protein)

Application Details

Application Notes: WB: 1 µg/mL

Optimal conditions should be determined by the investigator.

Comment: KCNK6 Blocking Peptide, catalog no. 33R-8027, is also available for use as a blocking control in assays to test for specificity of this KCNK6 antibody

Restrictions: For Research Use only

Handling

Format: Lyophilized

Reconstitution: Lyophilized powder. Add distilled water for a 1 mg/mL concentration of KCNK6 antibody in PBS

Concentration: Lot specific

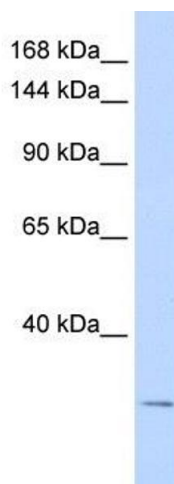
Buffer: PBS

Handling Advice: Avoid repeated freeze/thaw cycles.
Dilute only prior to immediate use.

Storage: 4 °C/-20 °C

Storage Comment: Store at 2-8 °C for short periods. For longer periods of storage, store at -20 °C.

Images



Western Blotting

Image 1. KCNK6 antibody used at 1 µg/ml to detect target protein.