

Datasheet for ABIN633777
anti-PKDREJ antibody (Middle Region)



[Go to Product page](#)

1 Image

Overview

Quantity:	100 µL
Target:	PKDREJ
Binding Specificity:	Middle Region
Reactivity:	Human
Host:	Rabbit
Clonality:	Polyclonal
Conjugate:	This PKDREJ antibody is un-conjugated
Application:	Western Blotting (WB)

Product Details

Immunogen:	PKDREJ antibody was raised using the middle region of PKDREJ corresponding to a region with amino acids GVADNGSVLEITPDVAEVYLVLRKNLTFAAFNLTVGPNSEVDGSLKKTGG
Specificity:	PKDREJ antibody was raised against the middle region of PKDREJ
Purification:	Affinity purified

Target Details

Target:	PKDREJ
Alternative Name:	PKDREJ (PKDREJ Products)
Background:	PkDaREJ is a member of the polycystin protein family. The encoded protein contains 11 transmembrane domains, a receptor for egg jelly (REJ) domain, a G-protein-coupled receptor proteolytic site (GPS) domain, and a polycystin-1, lipoxigenase, alpha-toxin (PLAT) domain.

Target Details

This protein may play a role in human reproduction.

Molecular Weight: 254 kDa (MW of target protein)

Application Details

Application Notes: WB: 1 µg/mL
Optimal conditions should be determined by the investigator.

Comment: PKDREJ Blocking Peptide, catalog no. 33R-3627, is also available for use as a blocking control in assays to test for specificity of this PKDREJ antibody

Restrictions: For Research Use only

Handling

Format: Lyophilized

Reconstitution: Lyophilized powder. Add distilled water for a 1 mg/mL concentration of PKDREJ antibody in PBS

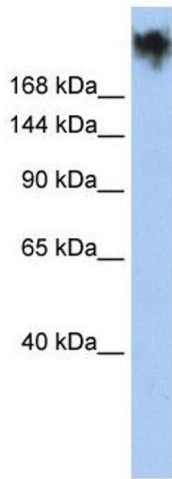
Concentration: Lot specific

Buffer: PBS

Handling Advice: Avoid repeated freeze/thaw cycles.
Dilute only prior to immediate use.

Storage: 4 °C/-20 °C

Storage Comment: Store at 2-8 °C for short periods. For longer periods of storage, store at -20 °C.



Western Blotting

Image 1. PKDREJ antibody used at 1 ug/ml to detect target protein.