

## Datasheet for ABIN633781 **anti-GRIN2C antibody (N-Term)**



[Go to Product page](#)

### 1 Image

#### Overview

Quantity:	100 µL
Target:	GRIN2C
Binding Specificity:	N-Term
Reactivity:	Human, Mouse, Rat
Host:	Rabbit
Clonality:	Polyclonal
Conjugate:	This GRIN2C antibody is un-conjugated
Application:	Western Blotting (WB)

#### Product Details

Immunogen:	GRIN2 C antibody was raised using the N terminal of GRIN2 corresponding to a region with amino acids VNTTNPSSLLTQICGLLGAAHVHGIVFEDNVDTEAVAQILDFISSQTHVP
Specificity:	GRIN2 C antibody was raised against the N terminal of GRIN2
Purification:	Affinity purified

#### Target Details

Target:	GRIN2C
Alternative Name:	GRIN2C ( <a href="#">GRIN2C Products</a> )
Background:	N-methyl-D-aspartate (NMDA) receptors are a class of ionotropic glutamate receptors. NMDA channel has been shown to be involved in long-term potentiation, an activity-dependent increase in the efficiency of synaptic transmission thought to underlie certain kinds of memory

## Target Details

---

and learning. NMDA receptor channels are heteromers composed of the key receptor subunit NMDAR1 (GRIN1) and 1 or more of the 4 NMDAR2 subunits: NMDAR2A (GRIN2A), NMDAR2B (GRIN2B), NMDAR2C (GRIN2C), and NMDAR2D (GRIN2D).

Molecular Weight: 136 kDa (MW of target protein)

Pathways: [Synaptic Membrane](#)

## Application Details

---

Application Notes: WB: 0.5 µg/mL  
Optimal conditions should be determined by the investigator.

Comment: GRIN2C Blocking Peptide, catalog no. 33R-9715, is also available for use as a blocking control in assays to test for specificity of this GRIN2C antibody

Restrictions: For Research Use only

## Handling

---

Format: Lyophilized

Reconstitution: Lyophilized powder. Add distilled water for a 1 mg/mL concentration of GRIN0 antibody in PBS

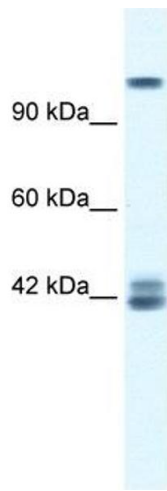
Concentration: Lot specific

Buffer: PBS

Handling Advice: Avoid repeated freeze/thaw cycles.  
Dilute only prior to immediate use.

Storage: 4 °C/-20 °C

Storage Comment: Store at 2-8 °C for short periods. For longer periods of storage, store at -20 °C.



### Western Blotting

**Image 1.** GRIN2C antibody used at 0.5 ug/ml to detect target protein.