

Datasheet for ABIN633804
anti-MTR antibody (C-Term)



[Go to Product page](#)

1 Image

Overview

Quantity:	100 µL
Target:	MTR
Binding Specificity:	C-Term
Reactivity:	Human, Rat, Mouse
Host:	Rabbit
Clonality:	Polyclonal
Conjugate:	This MTR antibody is un-conjugated
Application:	Western Blotting (WB)

Product Details

Immunogen:	MTR antibody was raised using the C terminal of MTR corresponding to a region with amino acids GSEQLDVADLRRLRYKIRPAPGYSPDHTEKLTMWRLADIEQSTGIRL
Specificity:	MTR antibody was raised against the C terminal of MTR
Cross-Reactivity:	Human
Purification:	Affinity purified

Target Details

Target:	MTR
Alternative Name:	MTR (MTR Products)
Background:	MTR is the enzyme 5-methyltetrahydrofolate-homocysteine methyltransferase. This enzyme,

Target Details

also known as cobalamin-dependent methionine synthase, catalyzes the final step in methionine biosynthesis. Mutations in MTR have been identified as the underlying cause of methylcobalamin deficiency complementation group G.

Molecular Weight: 140 kDa (MW of target protein)

Pathways: [Methionine Biosynthetic Process](#)

Application Details

Application Notes: WB: 1 µg/mL
Optimal conditions should be determined by the investigator.

Comment: MTR Blocking Peptide, catalog no. 33R-3557, is also available for use as a blocking control in assays to test for specificity of this MTR antibody

Restrictions: For Research Use only

Handling

Format: Lyophilized

Reconstitution: Lyophilized powder. Add distilled water for a 1 mg/mL concentration of MTR antibody in PBS

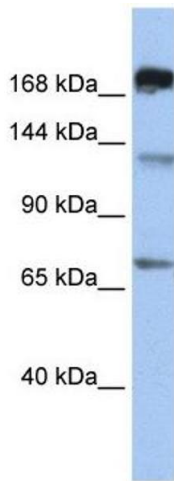
Concentration: Lot specific

Buffer: PBS

Handling Advice: Avoid repeated freeze/thaw cycles.
Dilute only prior to immediate use.

Storage: 4 °C/-20 °C

Storage Comment: Store at 2-8 °C for short periods. For longer periods of storage, store at -20 °C.



Western Blotting

Image 1. MTR antibody used at 1 ug/ml to detect target protein.