

## Datasheet for ABIN633810 **anti-ube3a antibody (N-Term)**



[Go to Product page](#)

### 1 Image

#### Overview

Quantity:	100 µL
Target:	ube3a
Binding Specificity:	N-Term
Reactivity:	Human
Host:	Rabbit
Clonality:	Polyclonal
Conjugate:	This ube3a antibody is un-conjugated
Application:	Western Blotting (WB)

#### Product Details

Immunogen:	UBE3 A antibody was raised using the N terminal Of Ube3 corresponding to a region with amino acids SLQAKDEDKDEDEKEKAACSAAMEEDSEASSRIGDSSQGDNNLQKLG
Specificity:	UBE3 A antibody was raised against the N terminal Of Ube3
Purification:	Affinity purified

#### Target Details

Target:	ube3a
Alternative Name:	UBE3A ( <a href="#">ube3a Products</a> )
Background:	UBE3A is an E3 ubiquitin-protein ligase, part of the ubiquitin protein degradation system. This imprinted gene is maternally expressed in brain and biallelically expressed in other tissues. Maternally inherited deletion of this gene causes Angelman Syndrome, characterized by severe

## Target Details

---

motor and intellectual retardation, ataxia, hypotonia, epilepsy, absence of speech, and characteristic facies. The protein also interacts with the E6 protein of human papillomavirus types 16 and 18, resulting in ubiquitination and proteolysis of tumor protein p53.

Molecular Weight: 101 kDa (MW of target protein)

Pathways: [Intracellular Steroid Hormone Receptor Signaling Pathway](#)

## Application Details

---

Application Notes: WB: 1 µg/mL  
Optimal conditions should be determined by the investigator.

Comment: UBE3A Blocking Peptide, catalog no. 33R-8617, is also available for use as a blocking control in assays to test for specificity of this UBE3A antibody

Restrictions: For Research Use only

## Handling

---

Format: Lyophilized

Reconstitution: Lyophilized powder. Add distilled water for a 1 mg/mL concentration of UBE0 antibody in PBS

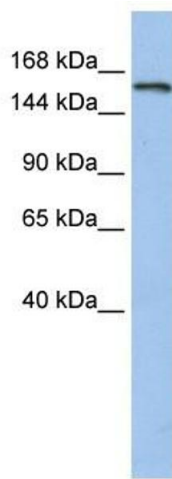
Concentration: Lot specific

Buffer: PBS

Handling Advice: Avoid repeated freeze/thaw cycles.  
Dilute only prior to immediate use.

Storage: 4 °C/-20 °C

Storage Comment: Store at 2-8 °C for short periods. For longer periods of storage, store at -20 °C.



### Western Blotting

**Image 1.** UBE3A antibody used at 1 ug/ml to detect target protein.