

Datasheet for ABIN633822 **anti-CRMP1 antibody (C-Term)**



[Go to Product page](#)

1 Image

Overview

| | |
|----------------------|--------------------------------------|
| Quantity: | 100 µL |
| Target: | CRMP1 |
| Binding Specificity: | C-Term |
| Reactivity: | Human, Mouse, Rat, Dog |
| Host: | Rabbit |
| Clonality: | Polyclonal |
| Conjugate: | This CRMP1 antibody is un-conjugated |
| Application: | Western Blotting (WB) |

Product Details

| | |
|---------------|--|
| Immunogen: | CRMP1 antibody was raised using the C terminal of CRMP1 corresponding to a region with amino acids SSPSKHQPPPPIRNLHQSNFSLSGAQIDDNNPRRTGHRIVAPPGGRSNITS |
| Specificity: | CRMP1 antibody was raised against the C terminal of CRMP1 |
| Purification: | Affinity purified |

Target Details

| | |
|-------------------|--|
| Target: | CRMP1 |
| Alternative Name: | CRMP1 (CRMP1 Products) |
| Background: | CRMP1 is a member of a family of cytosolic phosphoproteins expressed exclusively in the nervous system. The protein is thought to be a part of the semaphorin signal transduction pathway implicated in semaphorin-induced growth cone collapse during neural development. |

Target Details

Molecular Weight: 62 kDa (MW of target protein)

Application Details

Application Notes: WB: 0.25 µg/mL
Optimal conditions should be determined by the investigator.

Comment: CRMP1 Blocking Peptide, catalog no. 33R-8838, is also available for use as a blocking control in assays to test for specificity of this CRMP1 antibody

Restrictions: For Research Use only

Handling

Format: Lyophilized

Reconstitution: Lyophilized powder. Add distilled water for a 1 mg/mL concentration of CRMP1 antibody in PBS

Concentration: Lot specific

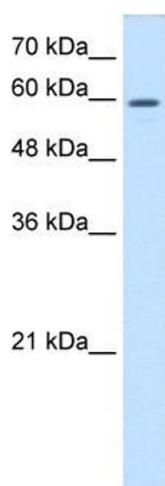
Buffer: PBS

Handling Advice: Avoid repeated freeze/thaw cycles.
Dilute only prior to immediate use.

Storage: 4 °C/-20 °C

Storage Comment: Store at 2-8 °C for short periods. For longer periods of storage, store at -20 °C.

Images



Western Blotting

Image 1. CRMP1 antibody used at 0.25 µg/ml to detect target protein.