

Datasheet for ABIN633824  
**anti-MPPED2 antibody (N-Term)**



[Go to Product page](#)

1 Image

## Overview

Quantity:	100 µL
Target:	MPPED2
Binding Specificity:	N-Term
Reactivity:	Human, Rat
Host:	Rabbit
Clonality:	Polyclonal
Conjugate:	This MPPED2 antibody is un-conjugated
Application:	Western Blotting (WB)

## Product Details

Immunogen:	MPPED2 antibody was raised using the N terminal of MPPED2 corresponding to a region with amino acids RFQPPHVHMVDPIPYDTPKPAGHTRFVCISDTHSRTDGIQMPYGDILLHT
Specificity:	MPPED2 antibody was raised against the N terminal of MPPED2
Purification:	Affinity purified

## Target Details

Target:	MPPED2
Alternative Name:	MPPED2 ( <a href="#">MPPED2 Products</a> )
Background:	The specific function of MPPED2 is not yet known.
Molecular Weight:	33 kDa (MW of target protein)

## Application Details

---

Application Notes:	WB: 1 µg/mL Optimal conditions should be determined by the investigator.
Comment:	MPPED2 Blocking Peptide, catalog no. 33R-7906, is also available for use as a blocking control in assays to test for specificity of this MPPED2 antibody
Restrictions:	For Research Use only

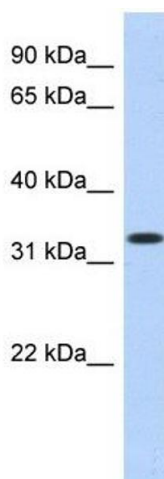
## Handling

---

Format:	Lyophilized
Reconstitution:	Lyophilized powder. Add distilled water for a 1 mg/mL concentration of MPPED2 antibody in PBS
Concentration:	Lot specific
Buffer:	PBS
Handling Advice:	Avoid repeated freeze/thaw cycles. Dilute only prior to immediate use.
Storage:	4 °C/-20 °C
Storage Comment:	Store at 2-8 °C for short periods. For longer periods of storage, store at -20 °C.

## Images

---



### Western Blotting

**Image 1.** MPPED2 antibody used at 1 ug/ml to detect target protein.