

Datasheet for ABIN633830  
**anti-SH3G2 antibody (N-Term)**



[Go to Product page](#)

1 Image

## Overview

Quantity:	100 µL
Target:	SH3G2
Binding Specificity:	N-Term
Reactivity:	Human, Mouse, Rat
Host:	Rabbit
Clonality:	Polyclonal
Conjugate:	This SH3G2 antibody is un-conjugated
Application:	Western Blotting (WB)

## Product Details

Immunogen:	SH3 GL2 antibody was raised using the N terminal of SH3 L2 corresponding to a region with amino acids INTMSKIRGQEKGPYPQAEALLAEAMLKFGRELGDDCNFGPALGEVGEA
Specificity:	SH3 GL2 antibody was raised against the N terminal of SH3 L2
Purification:	Affinity purified

## Target Details

Target:	SH3G2
Alternative Name:	SH3GL2 ( <a href="#">SH3G2 Products</a> )
Background:	SH3GL2 is implicated in synaptic vesicle endocytosis. SH3GL2 may recruit other proteins to membranes with high curvature.

## Target Details

Molecular Weight:	40 kDa (MW of target protein)
Pathways:	<a href="#">Neurotrophin Signaling Pathway</a> , <a href="#">EGFR Downregulation</a>

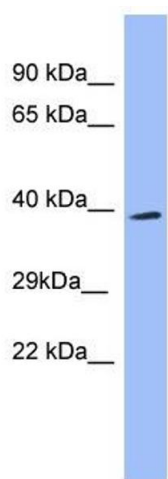
## Application Details

Application Notes:	WB: 1 µg/mL Optimal conditions should be determined by the investigator.
Comment:	SH3GL2 Blocking Peptide, catalog no. 33R-4083, is also available for use as a blocking control in assays to test for specificity of this SH3GL2 antibody
Restrictions:	For Research Use only

## Handling

Format:	Lyophilized
Reconstitution:	Lyophilized powder. Add distilled water for a 1 mg/mL concentration of SH0 L2 antibody in PBS
Concentration:	Lot specific
Buffer:	PBS
Handling Advice:	Avoid repeated freeze/thaw cycles. Dilute only prior to immediate use.
Storage:	4 °C/-20 °C
Storage Comment:	Store at 2-8 °C for short periods. For longer periods of storage, store at -20 °C.

## Images



### Western Blotting

**Image 1.** SH3GL2 antibody used at 1 ug/ml to detect target protein.