

Datasheet for ABIN633843

anti-ECHDC2 antibody (Middle Region)[Go to Product page](#)**1** Image

Overview

Quantity:	100 µL
Target:	ECHDC2
Binding Specificity:	Middle Region
Reactivity:	Human, Rat, Mouse
Host:	Rabbit
Clonality:	Polyclonal
Conjugate:	This ECHDC2 antibody is un-conjugated
Application:	Western Blotting (WB)

Product Details

Immunogen:	ECHDC2 antibody was raised using the middle region of ECHDC2 corresponding to a region with amino acids FVQRLRGLMNDIASSAVMGLIETTRGLLPGAGGTQRLPRCLGVALAKELI
Specificity:	ECHDC2 antibody was raised against the middle region of ECHDC2
Purification:	Affinity purified

Target Details

Target:	ECHDC2
Alternative Name:	ECHDC2 (ECHDC2 Products)
Background:	ECHDC2 belongs to the enoyl-CoA hydratase/isomerase family. The exact function of ECHDC2 remains unknown.

Target Details

Molecular Weight: 28 kDa (MW of target protein)

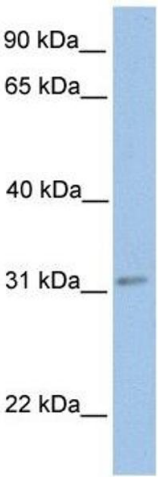
Application Details

Application Notes:	WB: 1 µg/mL Optimal conditions should be determined by the investigator.
Comment:	ECHDC2 Blocking Peptide, catalog no. 33R-3118, is also available for use as a blocking control in assays to test for specificity of this ECHDC2 antibody
Restrictions:	For Research Use only

Handling

Format:	Lyophilized
Reconstitution:	Lyophilized powder. Add distilled water for a 1 mg/mL concentration of ECHDC2 antibody in PBS
Concentration:	Lot specific
Buffer:	PBS
Handling Advice:	Avoid repeated freeze/thaw cycles. Dilute only prior to immediate use.
Storage:	4 °C/-20 °C
Storage Comment:	Store at 2-8 °C for short periods. For longer periods of storage, store at -20 °C.

Images



Western Blotting

Image 1. ECHDC2 antibody used at 1 ug/ml to detect target protein.