

Datasheet for ABIN633845  
**anti-PLA2G5 antibody (N-Term)**



[Go to Product page](#)

1 Image

## Overview

|                      |                                       |
|----------------------|---------------------------------------|
| Quantity:            | 100 µL                                |
| Target:              | PLA2G5                                |
| Binding Specificity: | N-Term                                |
| Reactivity:          | Human                                 |
| Host:                | Rabbit                                |
| Clonality:           | Polyclonal                            |
| Conjugate:           | This PLA2G5 antibody is un-conjugated |
| Application:         | Western Blotting (WB)                 |

## Product Details

|               |   |
|---------------|---|
| Immunogen:    | PLA2 G5 antibody was raised using the N terminal of PLA2 5 corresponding to a region with amino acids MKGLLPLAWFLACSVPAVQGGLLDLKSMIEKVTGKNALTNYGFGCYCGW |
| Specificity:  | PLA2 G5 antibody was raised against the N terminal of PLA2 5  |
| Purification: | Affinity purified   |

## Target Details

|                   |  |
|-------------------|--|
| Target:           | PLA2G5   |
| Alternative Name: | PLA2G5 ( <a href="#">PLA2G5 Products</a> )   |
| Background:       | This gene is a member of the secretory phospholipase A2 family. It is located in a tightly-linked cluster of secretory phospholipase A2 genes on chromosome 1. |

## Target Details

Molecular Weight: 14 kDa (MW of target protein)

Pathways: [Inositol Metabolic Process](#)

## Application Details

Application Notes: WB: 1 µg/mL  
Optimal conditions should be determined by the investigator.

Comment: PLA2G5 Blocking Peptide, catalog no. 33R-6140, is also available for use as a blocking control in assays to test for specificity of this PLA2G5 antibody

Restrictions: For Research Use only

## Handling

Format: Lyophilized

Reconstitution: Lyophilized powder. Add distilled water for a 1 mg/mL concentration of PLA0 5 antibody in PBS

Concentration: Lot specific

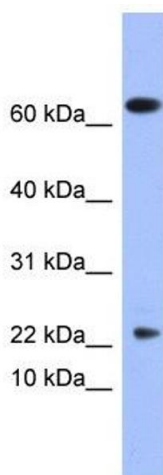
Buffer: PBS

Handling Advice: Avoid repeated freeze/thaw cycles.  
Dilute only prior to immediate use.

Storage: 4 °C/-20 °C

Storage Comment: Store at 2-8 °C for short periods. For longer periods of storage, store at -20 °C.

## Images



### Western Blotting

**Image 1.** PLA2G5 antibody used at 1 ug/ml to detect target protein.