

Datasheet for ABIN633856 **anti-OPTC antibody (C-Term)**



[Go to Product page](#)

1 Image

Overview

Quantity:	100 µL
Target:	OPTC
Binding Specificity:	C-Term
Reactivity:	Human
Host:	Rabbit
Clonality:	Polyclonal
Conjugate:	This OPTC antibody is un-conjugated
Application:	Western Blotting (WB)

Product Details

Immunogen:	Opticin antibody was raised using the C terminal of OPTC corresponding to a region with amino acids LSDNLLDSIPGPLPLSLRSVHLQNNLIETMQRDVFCDPPEEHKHTRRQLED
Specificity:	Opticin antibody was raised against the C terminal of OPTC
Purification:	Affinity purified

Target Details

Target:	OPTC
Alternative Name:	Opticin (OPTC Products)
Background:	Opticin belongs to class III of the small leucine-rich repeat protein (SLRP) family. Members of this family are typically associated with the extracellular matrix. Opticin is present in significant quantities in the vitreous of the eye and also ocalizes to the cornea, iris, ciliary body, optic nerve,

Target Details

choroid, retina, and fetal liver. Opticin may noncovalently bind collagen fibrils and regulate fibril morphology, spacing, and organization.

Molecular Weight: 35 kDa (MW of target protein)

Application Details

Application Notes: WB: 1 µg/mL
Optimal conditions should be determined by the investigator.

Comment: Opticin Blocking Peptide, catalog no. 33R-5414, is also available for use as a blocking control in assays to test for specificity of this Opticin antibody

Restrictions: For Research Use only

Handling

Format: Lyophilized

Reconstitution: Lyophilized powder. Add distilled water for a 1 mg/mL concentration of OPTC antibody in PBS

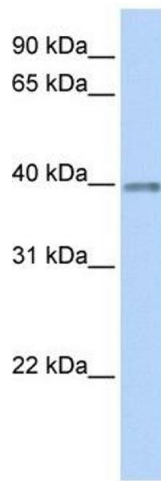
Concentration: Lot specific

Buffer: PBS

Handling Advice: Avoid repeated freeze/thaw cycles.
Dilute only prior to immediate use.

Storage: 4 °C/-20 °C

Storage Comment: Store at 2-8 °C for short periods. For longer periods of storage, store at -20 °C.



Western Blotting

Image 1. Opticin antibody used at 1 ug/ml to detect target protein.