

Datasheet for ABIN633864 **anti-NOM01 antibody (C-Term)**



[Go to Product page](#)

1 Image

Overview

Quantity:	100 µL
Target:	NOM01
Binding Specificity:	C-Term
Reactivity:	Human, Rat, Mouse
Host:	Rabbit
Clonality:	Polyclonal
Conjugate:	This NOM01 antibody is un-conjugated
Application:	Western Blotting (WB)

Product Details

Immunogen:	NOM01 antibody was raised using the C terminal of NOM01 corresponding to a region with amino acids QDIAQGSYIALPLTLLVLLAGYNHDKLIPLLLQLTSRLQGVRALGQAASD
Specificity:	NOM01 antibody was raised against the C terminal of NOM01
Purification:	Affinity purified

Target Details

Target:	NOM01
Alternative Name:	NOM01 (NOM01 Products)
Background:	NOM01 was originally thought to be related to the collagenase gene family. This gene is one of three highly similar genes in a region of duplication located on the p arm of chromosome 16. These three genes encode closely related proteins that may have the same function. The

Target Details

protein encoded by one of these genes has been identified as part of a protein complex that participates in the Nodal signaling pathway during vertebrate development. Mutations in ABCC6, which is located nearby, rather than mutations in this gene are associated with pseudoxanthoma elasticum (PXE).

Molecular Weight: 134 kDa (MW of target protein)

Application Details

Application Notes: WB: 1 µg/mL
Optimal conditions should be determined by the investigator.

Comment: NOMO1 Blocking Peptide, catalog no. 33R-7500, is also available for use as a blocking control in assays to test for specificity of this NOMO1 antibody

Restrictions: For Research Use only

Handling

Format: Lyophilized

Reconstitution: Lyophilized powder. Add distilled water for a 1 mg/mL concentration of NOMO1 antibody in PBS

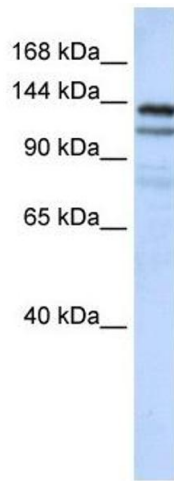
Concentration: Lot specific

Buffer: PBS

Handling Advice: Avoid repeated freeze/thaw cycles.
Dilute only prior to immediate use.

Storage: 4 °C/-20 °C

Storage Comment: Store at 2-8 °C for short periods. For longer periods of storage, store at -20 °C.



Western Blotting

Image 1. NOMO1 antibody used at 1 ug/ml to detect target protein.