

Datasheet for ABIN633871

anti-FKBP2 antibody (N-Term)[Go to Product page](#)**1** Image

Overview

Quantity:	100 µL
Target:	FKBP2
Binding Specificity:	N-Term
Reactivity:	Human, Mouse, Rat
Host:	Rabbit
Clonality:	Polyclonal
Conjugate:	This FKBP2 antibody is un-conjugated
Application:	Western Blotting (WB)

Product Details

Immunogen:	FKBP2 antibody was raised using the N terminal of FKBP2 corresponding to a region with amino acids RLSWFRVLTVLSICLSAVATATGAEGKRKLQIGVKKRVDHCPKSRKGDV
Specificity:	FKBP2 antibody was raised against the N terminal of FKBP2
Purification:	Affinity purified

Target Details

Target:	FKBP2
Alternative Name:	FKBP2 (FKBP2 Products)
Background:	FKBP2 is a member of the immunophilin protein family, which play a role in immunoregulation and basic cellular processes involving protein folding and trafficking. This protein is a cis-trans prolyl isomerase that binds the immunosuppressants FK506 and rapamycin. It is thought to

Target Details

function as an ER chaperone and may also act as a component of membrane cytoskeletal scaffolds. Multiple alternatively spliced variants, encoding the same protein, have been identified.

Molecular Weight: 16 kDa (MW of target protein)

Application Details

Application Notes: WB: 1 µg/mL
Optimal conditions should be determined by the investigator.

Comment: FKBP2 Blocking Peptide, catalog no. 33R-8052, is also available for use as a blocking control in assays to test for specificity of this FKBP2 antibody

Restrictions: For Research Use only

Handling

Format: Lyophilized

Reconstitution: Lyophilized powder. Add distilled water for a 1 mg/mL concentration of FKBP2 antibody in PBS

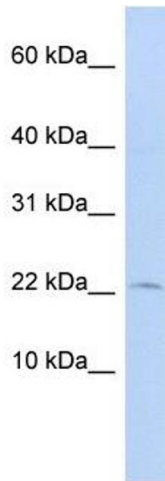
Concentration: Lot specific

Buffer: PBS

Handling Advice: Avoid repeated freeze/thaw cycles.
Dilute only prior to immediate use.

Storage: 4 °C/-20 °C

Storage Comment: Store at 2-8 °C for short periods. For longer periods of storage, store at -20 °C.



Western Blotting

Image 1. FKBP2 antibody used at 1 ug/ml to detect target protein.