

Datasheet for ABIN633879
anti-CRISP1 antibody (N-Term)



[Go to Product page](#)

1 Image

Overview

Quantity:	100 µL
Target:	CRISP1
Binding Specificity:	N-Term
Reactivity:	Human
Host:	Rabbit
Clonality:	Polyclonal
Conjugate:	This CRISP1 antibody is un-conjugated
Application:	Western Blotting (WB)

Product Details

Immunogen:	CRISP1 antibody was raised using the N terminal of CRISP1 corresponding to a region with amino acids LKMSWSEEAQNRIFSKYCDMTESNPLERRLPNTFCGENMHMTSYPVSW
Specificity:	CRISP1 antibody was raised against the N terminal of CRISP1
Purification:	Affinity purified

Target Details

Target:	CRISP1
Alternative Name:	CRISP1 (CRISP1 Products)
Background:	Fertilization consists of a sequence of specific cell-cell interactions culminating in the fusion of the sperm and egg plasma membranes. Recognition, binding, and fusion occur through the interaction of complementary molecules that are localized to specific domains of the sperm

Target Details

and egg plasma membranes. In the sperm, the postacrosomal region or equatorial segment is involved in sperm-egg plasma membrane fusion. CRISP1 is a member of the cysteine-rich secretory protein (CRISP) family. It is expressed in the epididymis, is secreted into the epididymal lumen, and binds to the postacrosomal region of the sperm head where it plays a role at fertilization in sperm-egg fusion through complementary sites localized on the egg surface.

Molecular Weight: 27 kDa (MW of target protein)

Application Details

Application Notes: WB: 1 µg/mL
Optimal conditions should be determined by the investigator.

Comment: CRISP1 Blocking Peptide, catalog no. 33R-5093, is also available for use as a blocking control in assays to test for specificity of this CRISP1 antibody

Restrictions: For Research Use only

Handling

Format: Lyophilized

Reconstitution: Lyophilized powder. Add distilled water for a 1 mg/mL concentration of CRISP1 antibody in PBS

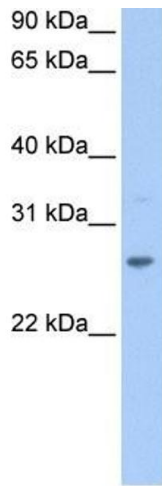
Concentration: Lot specific

Buffer: PBS

Handling Advice: Avoid repeated freeze/thaw cycles.
Dilute only prior to immediate use.

Storage: 4 °C/-20 °C

Storage Comment: Store at 2-8 °C for short periods. For longer periods of storage, store at -20 °C.



Western Blotting

Image 1. CRISP1 antibody used at 1 ug/ml to detect target protein.