

Datasheet for ABIN633881 **anti-SPINK1 antibody (N-Term)**



[Go to Product page](#)

1 Image

Overview

Quantity:	100 µL
Target:	SPINK1
Binding Specificity:	N-Term
Reactivity:	Human
Host:	Rabbit
Clonality:	Polyclonal
Conjugate:	This SPINK1 antibody is un-conjugated
Application:	Western Blotting (WB)

Product Details

Immunogen:	SPINK1 antibody was raised using the N terminal of SPINK1 corresponding to a region with amino acids KVTGIFLLSALALLSLSGNTGADSLGREAKCYNELNGCTKIYDPVCGTDG
Specificity:	SPINK1 antibody was raised against the N terminal of SPINK1
Purification:	Affinity purified

Target Details

Target:	SPINK1
Alternative Name:	SPINK1 (SPINK1 Products)
Background:	SPINK1 is a trypsin inhibitor, which is secreted from pancreatic acinar cells into pancreatic juice. It is thought to function in the prevention of trypsin-catalyzed premature activation of zymogens within the pancreas and the pancreatic duct. Mutations in this gene are associated

Target Details

with hereditary pancreatitis and tropical calcific pancreatitis.

Molecular Weight: 8 kDa (MW of target protein)

Application Details

Application Notes: WB: 1 µg/mL

Optimal conditions should be determined by the investigator.

Comment: SPINK1 Blocking Peptide, catalog no. 33R-4724, is also available for use as a blocking control in assays to test for specificity of this SPINK1 antibody

Restrictions: For Research Use only

Handling

Format: Lyophilized

Reconstitution: Lyophilized powder. Add distilled water for a 1 mg/mL concentration of SPINK1 antibody in PBS

Concentration: Lot specific

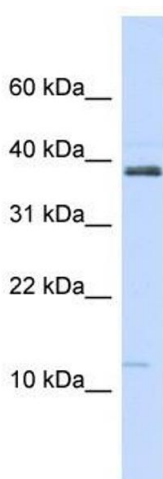
Buffer: PBS

Handling Advice: Avoid repeated freeze/thaw cycles.
Dilute only prior to immediate use.

Storage: 4 °C/-20 °C

Storage Comment: Store at 2-8 °C for short periods. For longer periods of storage, store at -20 °C.

Images



Western Blotting

Image 1. SPINK1 antibody used at 1 ug/ml to detect target protein.