

Datasheet for ABIN633883
anti-Fibromodulin antibody (N-Term)



[Go to Product page](#)

1 Image

Overview

Quantity:	100 µL
Target:	Fibromodulin (FMOD)
Binding Specificity:	N-Term
Reactivity:	Human, Mouse
Host:	Rabbit
Clonality:	Polyclonal
Conjugate:	This Fibromodulin antibody is un-conjugated
Application:	Western Blotting (WB)

Product Details

Immunogen:	Fibromodulin antibody was raised using the N terminal of FMOD corresponding to a region with amino acids VYFQNNQITSIQEGVFDNATGLLWIALHGNQITSDKVGRKVFSLRHLER
Specificity:	Fibromodulin antibody was raised against the N terminal of FMOD
Purification:	Affinity purified

Target Details

Target:	Fibromodulin (FMOD)
Alternative Name:	Fibromodulin (FMOD Products)
Background:	Fibromodulin is a member of a family of small interstitial proteoglycans, containing a central region composed of leucine-rich repeats with 4 keratan sulfate chains flanked by disulfide-bonded terminal domains. It may participate in the assembly of the extracellular matrix as it

Target Details

interacts with type I and type II collagen fibrils and inhibits fibrillogenesis in vitro. It may also regulate TGF-beta activities by sequestering TGF-beta into the extracellular matrix.

Molecular Weight: 41 kDa (MW of target protein)

Pathways: [Glycosaminoglycan Metabolic Process](#)

Application Details

Application Notes: WB: 1 µg/mL
Optimal conditions should be determined by the investigator.

Comment: Fibromodulin Blocking Peptide, catalog no. 33R-9917, is also available for use as a blocking control in assays to test for specificity of this Fibromodulin antibody

Restrictions: For Research Use only

Handling

Format: Lyophilized

Reconstitution: Lyophilized powder. Add distilled water for a 1 mg/mL concentration of FMOD antibody in PBS

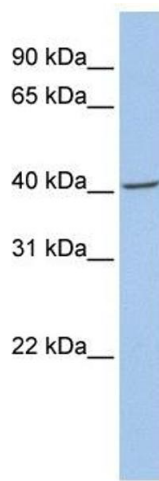
Concentration: Lot specific

Buffer: PBS

Handling Advice: Avoid repeated freeze/thaw cycles.
Dilute only prior to immediate use.

Storage: 4 °C/-20 °C

Storage Comment: Store at 2-8 °C for short periods. For longer periods of storage, store at -20 °C.



Western Blotting

Image 1. Fibromodulin antibody used at 1 ug/ml to detect target protein.