

Datasheet for ABIN633887  
**anti-MRPL47 antibody (Middle Region)**



[Go to Product page](#)

1 Image

## Overview

Quantity:	100 µL
Target:	MRPL47
Binding Specificity:	Middle Region
Reactivity:	Human, Mouse, Rat
Host:	Rabbit
Clonality:	Polyclonal
Conjugate:	This MRPL47 antibody is un-conjugated
Application:	Western Blotting (WB)

## Product Details

Immunogen:	MRPL47 antibody was raised using the middle region of MRPL47 corresponding to a region with amino acids VVQEREDALRLLQTGQERARPGAWRRDIFGRIIWHKFKQWWIPWHLNKRY
Specificity:	MRPL47 antibody was raised against the middle region of MRPL47
Purification:	Affinity purified

## Target Details

Target:	MRPL47
Alternative Name:	MRPL47 ( <a href="#">MRPL47 Products</a> )
Background:	Mammalian mitochondrial ribosomal proteins are encoded by nuclear genes and help in protein synthesis within the mitochondrion. Mitochondrial ribosomes (mitoribosomes) consist of a small 28S subunit and a large 39S subunit.

## Target Details

---

Molecular Weight: 17 kDa (MW of target protein)

## Application Details

---

Application Notes: WB: 1 µg/mL  
Optimal conditions should be determined by the investigator.

Comment: MRPL47 Blocking Peptide, catalog no. 33R-9890, is also available for use as a blocking control in assays to test for specificity of this MRPL47 antibody

Restrictions: For Research Use only

## Handling

---

Format: Lyophilized

Reconstitution: Lyophilized powder. Add distilled water for a 1 mg/mL concentration of MRPL47 antibody in PBS

Concentration: Lot specific

Buffer: PBS

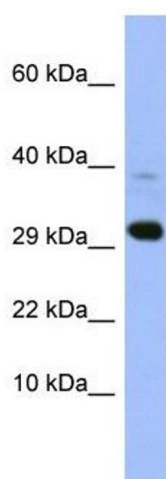
Handling Advice: Avoid repeated freeze/thaw cycles.  
Dilute only prior to immediate use.

Storage: 4 °C/-20 °C

Storage Comment: Store at 2-8 °C for short periods. For longer periods of storage, store at -20 °C.

## Images

---



### Western Blotting

**Image 1.** MRPL47 antibody used at 1 ug/ml to detect target protein.