

## Datasheet for ABIN633892 **anti-OXCT1 antibody (N-Term)**



[Go to Product page](#)

### 1 Image

#### Overview

|                      |                                      |
|----------------------|--------------------------------------|
| Quantity:            | 100 µL                               |
| Target:              | OXCT1                                |
| Binding Specificity: | N-Term                               |
| Reactivity:          | Human, Mouse, Rat                    |
| Host:                | Rabbit                               |
| Clonality:           | Polyclonal                           |
| Conjugate:           | This OXCT1 antibody is un-conjugated |
| Application:         | Western Blotting (WB)                |

#### Product Details

|               |  |
|---------------|--|
| Immunogen:    | OXCT1 antibody was raised using the N terminal of OXCT1 corresponding to a region with amino acids TLAERIRAGGAGVPAFYTPTGYGTLVQEGGSPISKYKDGSSVAIASKPREV |
| Specificity:  | OXCT1 antibody was raised against the N terminal of OXCT1  |
| Purification: | Affinity purified  |

#### Target Details

|                   |   |
|-------------------|---|
| Target:           | OXCT1   |
| Alternative Name: | OXCT1 ( <a href="#">OXCT1 Products</a> )  |
| Background:       | OXCT1 is a member of the 3-oxoacid CoA-transferase gene family. It is a homodimeric mitochondrial matrix enzyme that plays a central role in extrahepatic ketone body catabolism by catalyzing the reversible transfer of coenzyme A from succinyl-CoA to acetoacetate. |

## Target Details

|                   |  |
|-------------------|--|
| Molecular Weight: | 52 kDa (MW of target protein)  |
| Pathways:         | <a href="#">Positive Regulation of Peptide Hormone Secretion, Carbohydrate Homeostasis</a> |

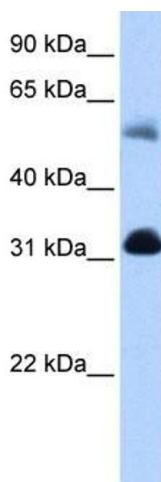
## Application Details

|                    |  |
|--------------------|--|
| Application Notes: | WB: 0.5 µg/mL<br>Optimal conditions should be determined by the investigator.  |
| Comment:           | OXCT1 Blocking Peptide, catalog no. 33R-9158, is also available for use as a blocking control in assays to test for specificity of this OXCT1 antibody |
| Restrictions:      | For Research Use only  |

## Handling

|                  |  |
|------------------|--|
| Format:          | Lyophilized  |
| Reconstitution:  | Lyophilized powder. Add distilled water for a 1 mg/mL concentration of OXCT1 antibody in PBS |
| Concentration:   | Lot specific   |
| Buffer:          | PBS  |
| Handling Advice: | Avoid repeated freeze/thaw cycles.<br>Dilute only prior to immediate use.                    |
| Storage:         | 4 °C/-20 °C  |
| Storage Comment: | Store at 2-8 °C for short periods. For longer periods of storage, store at -20 °C.           |

## Images



### Western Blotting

**Image 1.** OXCT1 antibody used at 0.5 µg/ml to detect target protein.