

Datasheet for ABIN633894 **anti-CYP2C9 antibody (C-Term)**



[Go to Product page](#)

1 Image

Overview

Quantity:	100 µL
Target:	CYP2C9
Binding Specificity:	C-Term
Reactivity:	Human
Host:	Rabbit
Clonality:	Polyclonal
Conjugate:	This CYP2C9 antibody is un-conjugated
Application:	Western Blotting (WB)

Product Details

Immunogen:	CYP2 C9 antibody was raised using the C terminal of CYP2 9 corresponding to a region with amino acids AGMELFLFLTSLQNFNLKSLVDPKNLDTTPVNGFASVPPFYQLCFIPV
Specificity:	CYP2 C9 antibody was raised against the C terminal of CYP2 9
Purification:	Affinity purified

Target Details

Target:	CYP2C9
Alternative Name:	CYP2C9 (CYP2C9 Products)
Background:	CYP2C9 is a member of the cytochrome P450 superfamily of enzymes. The cytochrome P450 proteins are monooxygenases which catalyze many reactions involved in drug metabolism and synthesis of cholesterol, steroids and other lipids. This protein localizes to the endoplasmic

Target Details

reticulum and its expression is induced by rifampin. The enzyme is known to metabolize many xenobiotics, including phenytoin, tolbutamide, ibuprofen and S-warfarin. Studies identifying individuals who are poor metabolizers of phenytoin and tolbutamide suggest that CYP2C9 gene is polymorphic.

Molecular Weight: 55 kDa (MW of target protein)

Application Details

Application Notes: WB: 0.25 µg/mL
Optimal conditions should be determined by the investigator.

Comment: CYP2C9 Blocking Peptide, catalog no. 33R-1211, is also available for use as a blocking control in assays to test for specificity of this CYP2C9 antibody

Restrictions: For Research Use only

Handling

Format: Lyophilized

Reconstitution: Lyophilized powder. Add distilled water for a 1 mg/mL concentration of CYP0 9 antibody in PBS

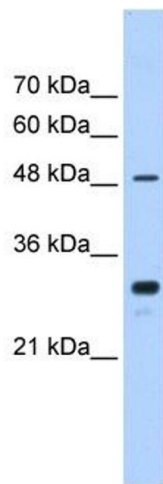
Concentration: Lot specific

Buffer: PBS

Handling Advice: Avoid repeated freeze/thaw cycles.
Dilute only prior to immediate use.

Storage: 4 °C/-20 °C

Storage Comment: Store at 2-8 °C for short periods. For longer periods of storage, store at -20 °C.



Western Blotting

Image 1. CYP2C9 antibody used at 0.25 ug/ml to detect target protein.