

## Datasheet for ABIN633903 **anti-BCKDHA antibody (N-Term)**



[Go to Product page](#)

### 1 Image

#### Overview

Quantity:	100 µL
Target:	BCKDHA
Binding Specificity:	N-Term
Reactivity:	Human, Mouse, Rat
Host:	Rabbit
Clonality:	Polyclonal
Conjugate:	This BCKDHA antibody is un-conjugated
Application:	Western Blotting (WB)

#### Product Details

Immunogen:	BCKDHA antibody was raised using the N terminal of BCKDHA corresponding to a region with amino acids NVISGIPIYRVMDRQGQIINPSEDPHLPKEKVLKLYKSMTLLNTMDRILY
Specificity:	BCKDHA antibody was raised against the N terminal of BCKDHA
Purification:	Affinity purified

#### Target Details

Target:	BCKDHA
Alternative Name:	BCKDHA ( <a href="#">BCKDHA Products</a> )
Background:	The branched-chain alpha-keto dehydrogenase complex catalyzes the overall conversion of alpha-keto acids to acyl-CoA and CO <sub>2</sub> . It contains multiple copies of three enzymatic components: branched-chain alpha-keto acid decarboxylase (E1), lipoamide acyltransferase

## Target Details

---

(E2) and lipoamide dehydrogenase (E3).

Molecular Weight: 50 kDa (MW of target protein)

## Application Details

---

Application Notes: WB: 1 µg/mL  
Optimal conditions should be determined by the investigator.

Comment: BCKDHA Blocking Peptide, catalog no. 33R-6914, is also available for use as a blocking control in assays to test for specificity of this BCKDHA antibody

Restrictions: For Research Use only

## Handling

---

Format: Lyophilized

Reconstitution: Lyophilized powder. Add distilled water for a 1 mg/mL concentration of BCKDHA antibody in PBS

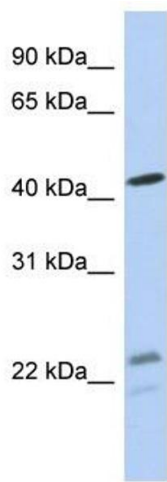
Concentration: Lot specific

Buffer: PBS

Handling Advice: Avoid repeated freeze/thaw cycles.  
Dilute only prior to immediate use.

Storage: 4 °C/-20 °C

Storage Comment: Store at 2-8 °C for short periods. For longer periods of storage, store at -20 °C.



### Western Blotting

**Image 1.** BCKDHA antibody used at 1 ug/ml to detect target protein.