

Datasheet for ABIN633904 **anti-CPE antibody (N-Term)**



[Go to Product page](#)

1 Image

Overview

Quantity:	100 µL
Target:	CPE
Binding Specificity:	N-Term
Reactivity:	Human, Mouse, Rat
Host:	Rabbit
Clonality:	Polyclonal
Conjugate:	This CPE antibody is un-conjugated
Application:	Western Blotting (WB)

Product Details

Immunogen:	Carboxypeptidase E antibody was raised using the N terminal of CPE corresponding to a region with amino acids GMRRRRRLQQEDGISFEYHRYPELREALVSVWLQCTAISRIYTVGRSFEG
Specificity:	Carboxypeptidase E antibody was raised against the N terminal of CPE
Purification:	Affinity purified

Target Details

Target:	CPE
Alternative Name:	Carboxypeptidase E (CPE Products)
Background:	CPE is a carboxypeptidase that cleaves C-terminal amino acid residues and is involved in the biosynthesis of peptide hormones and neurotransmitters, including insulin. It is a peripheral membrane protein. The protein specifically binds regulated secretory pathway proteins,

Target Details

including prohormones, but not constitutively secreted proteins.

Molecular Weight: 52 kDa (MW of target protein)

Pathways: [Peptide Hormone Metabolism](#), [Synaptic Membrane](#)

Application Details

Application Notes: WB: 1 µg/mL

Optimal conditions should be determined by the investigator.

Comment: Carboxypeptidase E Blocking Peptide, catalog no. 33R-3440, is also available for use as a blocking control in assays to test for specificity of this Carboxypeptidase E antibody

Restrictions: For Research Use only

Handling

Format: Lyophilized

Reconstitution: Lyophilized powder. Add distilled water for a 1 mg/mL concentration of CPE antibody in PBS

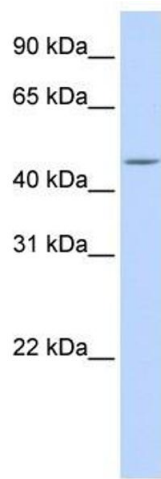
Concentration: Lot specific

Buffer: PBS

Handling Advice: Avoid repeated freeze/thaw cycles.
Dilute only prior to immediate use.

Storage: 4 °C/-20 °C

Storage Comment: Store at 2-8 °C for short periods. For longer periods of storage, store at -20 °C.



Western Blotting

Image 1. Carboxypeptidase E antibody used at 1 ug/ml to detect target protein.