

Datasheet for ABIN633906
anti-REG1B antibody (N-Term)



[Go to Product page](#)

1 Image

Overview

Quantity:	100 µL
Target:	REG1B
Binding Specificity:	N-Term
Reactivity:	Human
Host:	Rabbit
Clonality:	Polyclonal
Conjugate:	This REG1B antibody is un-conjugated
Application:	Western Blotting (WB)

Product Details

Immunogen:	REG1 B antibody was raised using the N terminal of REG1 corresponding to a region with amino acids MAQTNSFFMLISSLMFLSLSQGGESQTELPNPRISCEPGETNAYRSYCYF
Specificity:	REG1 B antibody was raised against the N terminal of REG1
Purification:	Affinity purified

Target Details

Target:	REG1B
Alternative Name:	REG1B (REG1B Products)
Background:	REG1B might act as an inhibitor of spontaneous calcium carbonate precipitation. REG1B may be associated with neuronal sprouting in brain, and with brain and pancreas regeneration.

Target Details

Molecular Weight: 16 kDa (MW of target protein)

Application Details

Application Notes: WB: 1 µg/mL
Optimal conditions should be determined by the investigator.

Comment: REG1B Blocking Peptide, catalog no. 33R-5728, is also available for use as a blocking control in assays to test for specificity of this REG1B antibody

Restrictions: For Research Use only

Handling

Format: Lyophilized

Reconstitution: Lyophilized powder. Add distilled water for a 1 mg/mL concentration of REGO antibody in PBS

Concentration: Lot specific

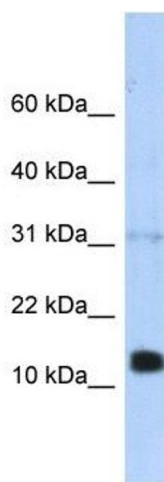
Buffer: PBS

Handling Advice: Avoid repeated freeze/thaw cycles.
Dilute only prior to immediate use.

Storage: 4 °C/-20 °C

Storage Comment: Store at 2-8 °C for short periods. For longer periods of storage, store at -20 °C.

Images



Western Blotting

Image 1. REG1B antibody used at 1 ug/ml to detect target protein.