

Datasheet for ABIN633909 **anti-XPNPEP2 antibody**



[Go to Product page](#)

1 Image

Overview

Quantity:	100 µL
Target:	XPNPEP2
Reactivity:	Human, Mouse, Rat
Host:	Rabbit
Clonality:	Polyclonal
Conjugate:	This XPNPEP2 antibody is un-conjugated
Application:	Western Blotting (WB)

Product Details

Immunogen:	XPNPEP2 antibody was raised using a synthetic peptide corresponding to a region with amino acids QALLKASHVRDAVAVIRYLVWLEKNVPGKTVDEFSGAEIVDKFRGEEQFS
Purification:	Affinity purified

Target Details

Target:	XPNPEP2
Alternative Name:	XPNPEP2 (XPNPEP2 Products)
Background:	<p>Aminopeptidase P is a hydrolase specific for N-terminal imido bonds, which are common to several collagen degradation products, neuropeptides, vasoactive peptides, and cytokines. Structurally, the enzyme is a member of the 'pita bread fold' family and occurs in mammalian tissues in both soluble and GPI-anchored membrane-bound forms. A membrane-bound and soluble form of this enzyme has been identified as products of two separate genes.</p>

Target Details

Molecular Weight: 75 kDa (MW of target protein)

Application Details

Application Notes: WB: 1 µg/mL
Optimal conditions should be determined by the investigator.

Comment: XPNPEP2 Blocking Peptide, catalog no. 33R-7464, is also available for use as a blocking control in assays to test for specificity of this XPNPEP2 antibody

Restrictions: For Research Use only

Handling

Format: Lyophilized

Reconstitution: Lyophilized powder. Add distilled water for a 1 mg/mL concentration of XPNPEP2 antibody in PBS

Concentration: Lot specific

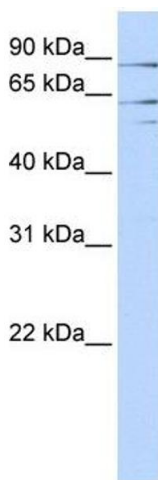
Buffer: PBS

Handling Advice: Avoid repeated freeze/thaw cycles.

Storage: 4 °C/-20 °C

Storage Comment: Store at 2-8 °C for short periods. For longer periods of storage, store at -20 °C.

Images



Western Blotting

Image 1. XPNPEP2 antibody used at 1 ug/ml to detect target protein.