

Datasheet for ABIN633919  
**anti-Sep 15 antibody (Middle Region)**



[Go to Product page](#)

1 Image

## Overview

Quantity:	100 µL
Target:	Sep 15 (SEP15)
Binding Specificity:	Middle Region
Reactivity:	Human, Mouse, Rat
Host:	Rabbit
Clonality:	Polyclonal
Conjugate:	This Sep 15 antibody is un-conjugated
Application:	Western Blotting (WB)

## Product Details

Immunogen:	Selenoprotein antibody was raised using the middle region of 15 kDa Selenoprotein corresponding to a region with amino acids SDKPKLFRGLQIKYVRGSDPVLKLLDDNGNIAEELSILKWNTDSVEEFLS
Specificity:	Selenoprotein antibody was raised against the middle region of 15 kDa Selenoprotein
Purification:	Affinity purified

## Target Details

Target:	Sep 15 (SEP15)
Alternative Name:	Selenoprotein ( <a href="#">SEP15 Products</a> )
Background:	SEP15 is a selenoprotein, which contains a selenocysteine (Sec) residue at its active site. Studies in mouse suggest that this selenoprotein may have redox function and may be involved

## Target Details

---

in the quality control of protein folding. The gene that encodes the protein is localized on chromosome 1p31, a genetic locus commonly mutated or deleted in human cancers.

Molecular Weight: 15 kDa (MW of target protein)

## Application Details

---

Application Notes: WB: 1 µg/mL  
Optimal conditions should be determined by the investigator.

Comment: Selenoprotein Blocking Peptide, catalog no. 33R-8360, is also available for use as a blocking control in assays to test for specificity of this Selenoprotein antibody

Restrictions: For Research Use only

## Handling

---

Format: Lyophilized

Reconstitution: Lyophilized powder. Add distilled water for a 1 mg/mL concentration of 42248 antibody in PBS

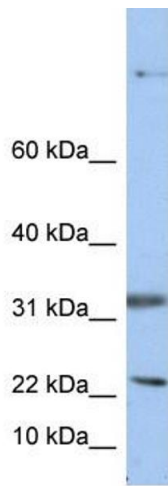
Concentration: Lot specific

Buffer: PBS

Handling Advice: Avoid repeated freeze/thaw cycles.  
Dilute only prior to immediate use.

Storage: 4 °C/-20 °C

Storage Comment: Store at 2-8 °C for short periods. For longer periods of storage, store at -20 °C.



### Western Blotting

**Image 1.** Selenoprotein antibody used at 1 ug/ml to detect target protein.