

Datasheet for ABIN633921

anti-GSTM1 antibody (N-Term)[Go to Product page](#)**1** Image

Overview

Quantity:	100 µL
Target:	GSTM1
Binding Specificity:	N-Term
Reactivity:	Human, Mouse, Rat, Dog
Host:	Rabbit
Clonality:	Polyclonal
Conjugate:	This GSTM1 antibody is un-conjugated
Application:	Western Blotting (WB)

Product Details

Immunogen:	GSTM1 antibody was raised using the N terminal of GSTM1 corresponding to a region with amino acids KKYTMGDAPDYDRSQWLNEKFKLGLDFPNLPYLIDGAHKITQSNAILCYI
Specificity:	GSTM1 antibody was raised against the N terminal of GSTM1
Purification:	Affinity purified

Target Details

Target:	GSTM1
Alternative Name:	GSTM1 (GSTM1 Products)
Background:	Cytosolic and membrane-bound forms of glutathione S-transferase are two distinct supergene families. At present, eight distinct classes of the soluble cytoplasmic mammalian glutathione S-transferases have been identified: alpha, kappa, mu, omega, pi, sigma, theta and zeta. GSTM1 a

Target Details

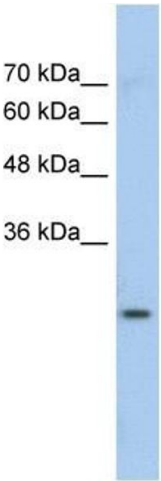
	glutathione S-transferase that belongs to the mu class. The mu class of enzymes functions in the detoxification of electrophilic compounds, including carcinogens, therapeutic drugs, environmental toxins and products of oxidative stress, by conjugation with glutathione.
Molecular Weight:	24 kDa (MW of target protein)
Pathways:	Negative Regulation of Transporter Activity

Application Details

Application Notes:	WB: 1 µg/mL Optimal conditions should be determined by the investigator.
Comment:	GSTM1 Blocking Peptide, catalog no. 33R-4498, is also available for use as a blocking control in assays to test for specificity of this GSTM1 antibody
Restrictions:	For Research Use only

Handling

Format:	Lyophilized
Reconstitution:	Lyophilized powder. Add distilled water for a 1 mg/mL concentration of GSTM1 antibody in PBS
Concentration:	Lot specific
Buffer:	PBS
Handling Advice:	Avoid repeated freeze/thaw cycles. Dilute only prior to immediate use.
Storage:	4 °C/-20 °C
Storage Comment:	Store at 2-8 °C for short periods. For longer periods of storage, store at -20 °C.



Western Blotting

Image 1. GSTM1 antibody used at 1 ug/ml to detect target protein.