

Datasheet for ABIN633930
anti-SMPDL3B antibody (N-Term)



[Go to Product page](#)

2 Images

Overview

Quantity:	100 µL
Target:	SMPDL3B
Binding Specificity:	N-Term
Reactivity:	Human
Host:	Rabbit
Clonality:	Polyclonal
Conjugate:	This SMPDL3B antibody is un-conjugated
Application:	Western Blotting (WB), Immunohistochemistry (IHC)

Product Details

Immunogen:	SMPDL3 B antibody was raised using the N terminal of SMPDL3 corresponding to a region with amino acids ILWTGDDTPHVPDEKLGEEAVLEIVERLTKLIREVFPDTKVYAALGNHDF
Specificity:	SMPDL3 B antibody was raised against the N terminal of SMPDL3
Purification:	Affinity purified

Target Details

Target:	SMPDL3B
Alternative Name:	SMPDL3B (SMPDL3B Products)
Background:	Located on chromosome 1, this gene encodes for acid sphingomyelinase-like phosphodiesterase 3b precursor protein.

Target Details

Molecular Weight: 52 kDa (MW of target protein)

Application Details

Application Notes: WB: 1 µg/mL, IHC: 4-8 µg/mL

Optimal conditions should be determined by the investigator.

Comment: SMPDL3B Blocking Peptide, catalog no. 33R-4064, is also available for use as a blocking control in assays to test for specificity of this SMPDL3B antibody

Restrictions: For Research Use only

Handling

Format: Lyophilized

Reconstitution: Lyophilized powder. Add distilled water for a 1 mg/mL concentration of SMPDL0 antibody in PBS

Concentration: Lot specific

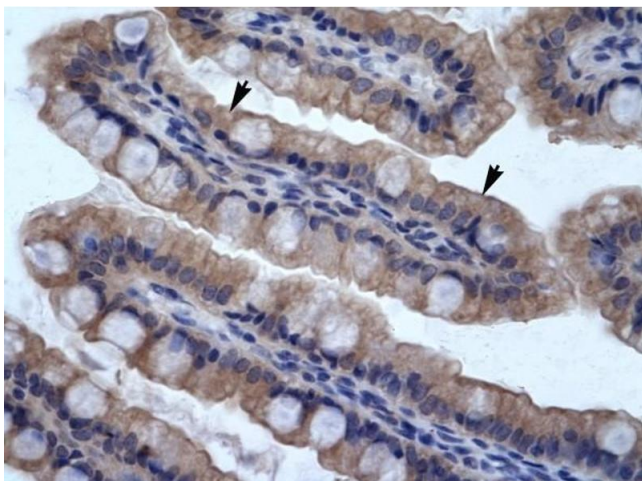
Buffer: PBS

Handling Advice: Avoid repeated freeze/thaw cycles.
Dilute only prior to immediate use.

Storage: 4 °C/-20 °C

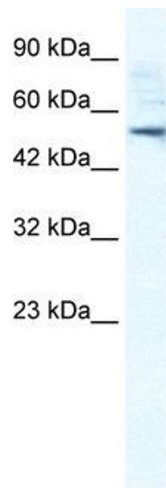
Storage Comment: Store at 2-8 °C for short periods. For longer periods of storage, store at -20 °C.

Images



Immunohistochemistry

Image 1. SMPDL3B antibody was used for immunohistochemistry at a concentration of 4-8 ug/ml to stain Epithelial cells of intestinal villus (arrows) in Human Intestine. Magnification is at 400X



Western Blotting

Image 2. SMPDL3B antibody used at 1 ug/ml to detect target protein.