

Datasheet for ABIN633944
anti-CHST6 antibody



[Go to Product page](#)

1 Image

Overview

Quantity:	100 µL
Target:	CHST6
Reactivity:	Human, Rat, Mouse
Host:	Rabbit
Clonality:	Polyclonal
Conjugate:	This CHST6 antibody is un-conjugated
Application:	Western Blotting (WB)

Product Details

Immunogen:	CHST6 antibody was raised using a synthetic peptide corresponding to a region with amino acids YAFTGLSLTPQLEAWIHNITHGSGPGARREAFKTSSRNALNVSQAWRHAL
Purification:	Affinity purified

Target Details

Target:	CHST6
Alternative Name:	CHST6 (CHST6 Products)
Background:	CHST6 catalyzes the transfer of sulfate to position 6 of non-reducing N-acetylglucosamine (GlcNAc) residues of keratan. It mediates sulfation of keratan in cornea. Keratan sulfate plays a central role in maintaining corneal transparency. CHST6 acts on the non-reducing terminal GlcNAc of short and long carbohydrate substrates that have poly-N-acetyllactosamine structures.

Target Details

Molecular Weight: 44 kDa (MW of target protein)

Pathways: [Glycosaminoglycan Metabolic Process](#)

Application Details

Application Notes: WB: 1 µg/mL

Optimal conditions should be determined by the investigator.

Comment: CHST6 Blocking Peptide, catalog no. 33R-10046, is also available for use as a blocking control in assays to test for specificity of this CHST6 antibody

Restrictions: For Research Use only

Handling

Format: Lyophilized

Reconstitution: Lyophilized powder. Add distilled water for a 1 mg/mL concentration of CHST6 antibody in PBS

Concentration: Lot specific

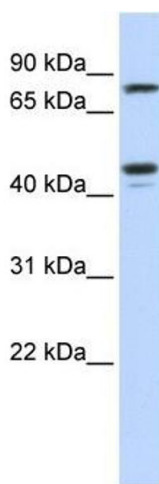
Buffer: PBS

Handling Advice: Avoid repeated freeze/thaw cycles.

Storage: 4 °C/-20 °C

Storage Comment: Store at 2-8 °C for short periods. For longer periods of storage, store at -20 °C.

Images



Western Blotting

Image 1. CHST6 antibody used at 1 µg/ml to detect target protein.