

Datasheet for ABIN633962
anti-P4HB antibody (N-Term)



[Go to Product page](#)

3 Images

Overview

Quantity:	100 µL
Target:	P4HB
Binding Specificity:	N-Term
Reactivity:	Human, Mouse, Rat
Host:	Rabbit
Clonality:	Polyclonal
Conjugate:	This P4HB antibody is un-conjugated
Application:	Western Blotting (WB), Immunohistochemistry (IHC)

Product Details

Immunogen:	P4 HB antibody was raised using the N terminal of P4 B corresponding to a region with amino acids TIKFFRNGDTASPKEYTAGREADDIVNWLKKRTGPAATTLPDGAAAESLV
Specificity:	P4 HB antibody was raised against the N terminal of P4 B
Purification:	Affinity purified

Target Details

Target:	P4HB
Alternative Name:	P4HB (P4HB Products)
Background:	P4HB is the beta subunit of prolyl 4-hydroxylase, a highly abundant multifunctional enzyme that belongs to the protein disulfide isomerase family. When present as a tetramer consisting of two alpha and two beta subunits, this enzyme is involved in hydroxylation of prolyl residues in

Target Details

preprocollagen. This enzyme is also a disulfide isomerase containing two thioredoxin domains that catalyze the formation, breakage and rearrangement of disulfide bonds. Other known functions include its ability to act as a chaperone that inhibits aggregation of misfolded proteins in a concentration-dependent manner, its ability to bind thyroid hormone, its role in both the influx and efflux of S-nitrosothiol-bound nitric oxide, and its function as a subunit of the microsomal triglyceride transfer protein complex.

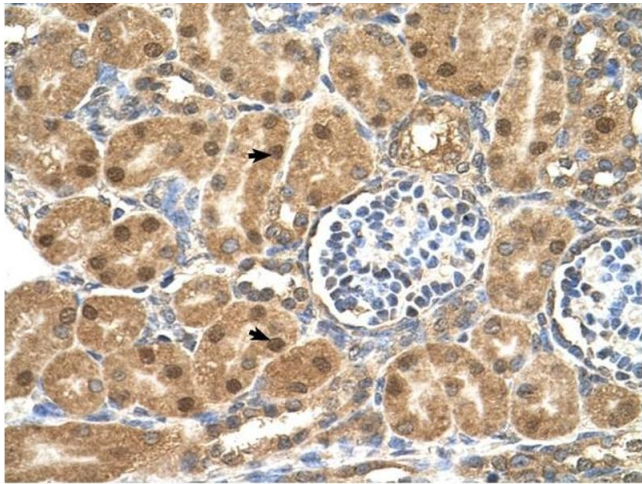
Molecular Weight:	55 kDa (MW of target protein)
Pathways:	Maintenance of Protein Location , Cell RedoxHomeostasis , Lipid Metabolism

Application Details

Application Notes:	WB: 0.5 µg/mL, IHC: 4-8 µg/mL Optimal conditions should be determined by the investigator.
Comment:	P4HB Blocking Peptide, catalog no. 33R-9118, is also available for use as a blocking control in assays to test for specificity of this P4HB antibody
Restrictions:	For Research Use only

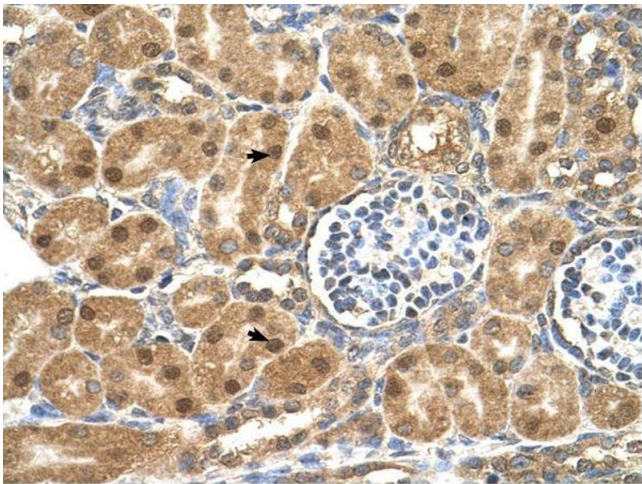
Handling

Format:	Lyophilized
Reconstitution:	Lyophilized powder. Add distilled water for a 1 mg/mL concentration of P0 B antibody in PBS
Concentration:	Lot specific
Buffer:	PBS
Handling Advice:	Avoid repeated freeze/thaw cycles. Dilute only prior to immediate use.
Storage:	4 °C/-20 °C
Storage Comment:	Store at 2-8 °C for short periods. For longer periods of storage, store at -20 °C.



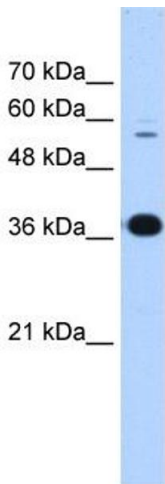
Immunohistochemistry

Image 1. P4HB antibody was used for immunohistochemistry at a concentration of 4-8 ug/ml to stain Epithelial cells of renal tubule (arrows) in Human Kidney. Magnification is at 400X



Immunohistochemistry

Image 2. P4HB antibody was used for immunohistochemistry at a concentration of 4-8 ug/ml. Magnification is at 400X



Western Blotting

Image 3. P4HB antibody used at 0.5 ug/ml to detect target protein.